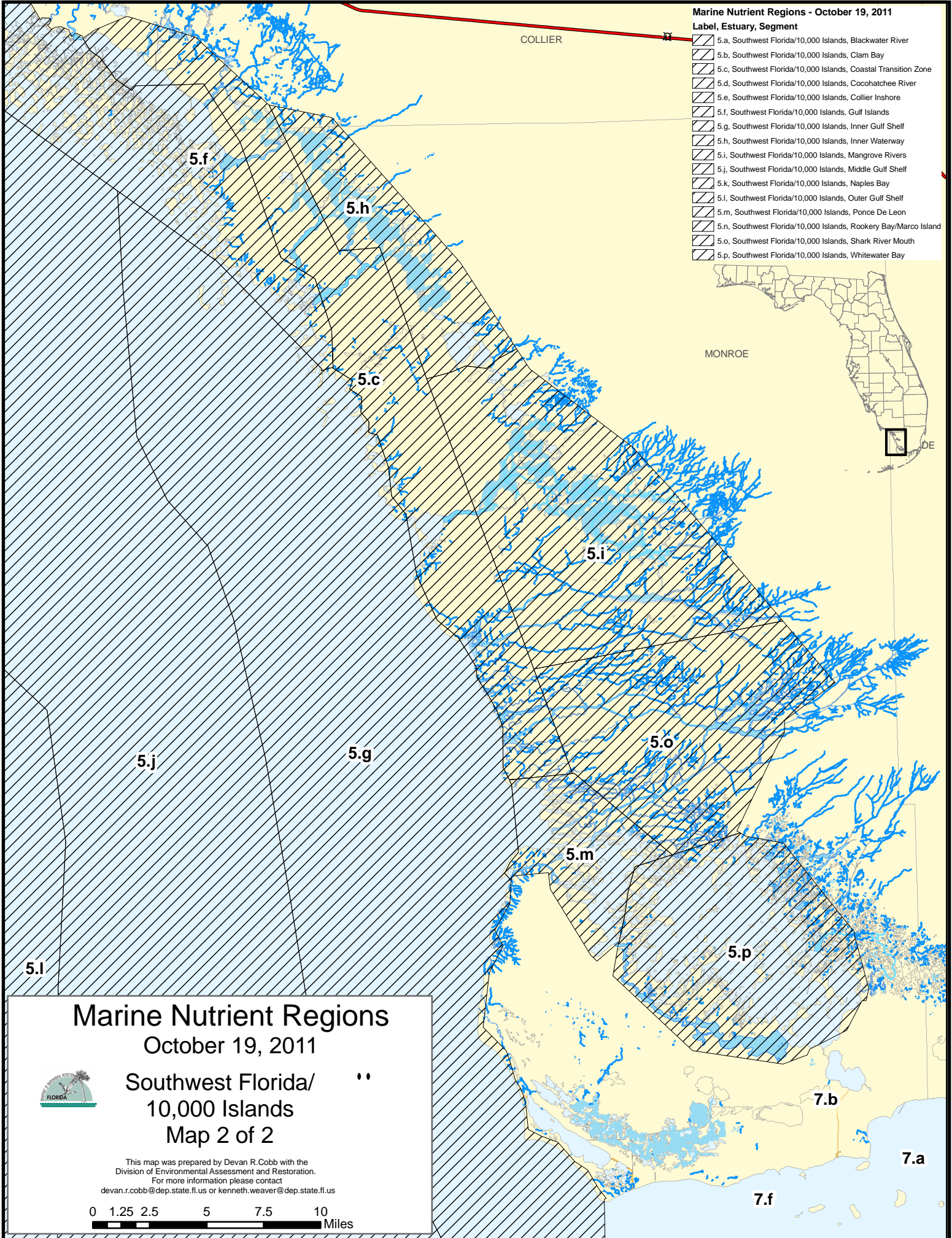


Marine Nutrient Regions - October 19, 2011

Label, Estuary, Segment

-  5.a, Southwest Florida/10,000 Islands, Blackwater River
-  5.b, Southwest Florida/10,000 Islands, Clam Bay
-  5.c, Southwest Florida/10,000 Islands, Coastal Transition Zone
-  5.d, Southwest Florida/10,000 Islands, Cocohatchee River
-  5.e, Southwest Florida/10,000 Islands, Collier Inshore
-  5.f, Southwest Florida/10,000 Islands, Gulf Islands
-  5.g, Southwest Florida/10,000 Islands, Inner Gulf Shelf
-  5.h, Southwest Florida/10,000 Islands, Inner Waterway
-  5.i, Southwest Florida/10,000 Islands, Mangrove Rivers
-  5.j, Southwest Florida/10,000 Islands, Middle Gulf Shelf
-  5.k, Southwest Florida/10,000 Islands, Naples Bay
-  5.l, Southwest Florida/10,000 Islands, Outer Gulf Shelf
-  5.m, Southwest Florida/10,000 Islands, Ponce De Leon
-  5.n, Southwest Florida/10,000 Islands, Rookery Bay/Marco Island
-  5.o, Southwest Florida/10,000 Islands, Shark River Mouth
-  5.p, Southwest Florida/10,000 Islands, Whitewater Bay



Marine Nutrient Regions

October 19, 2011

Southwest Florida/
10,000 Islands
Map 2 of 2



This map was prepared by Devan R. Cobb with the
Division of Environmental Assessment and Restoration.
For more information please contact
devan.r.cobb@dep.state.fl.us or kenneth.weaver@dep.state.fl.us

0 1.25 2.5 5 7.5 10 Miles