

YOUNG, VAN ASSENDERP & QUALLS, P.A.
ATTORNEYS AND COUNSELORS AT LAW

216 South Monroe Street
Tallahassee, Florida 32301

Post Office Box 1833
Tallahassee, FL 32302-1833

Telephone (850) 222-7206
Telecopier (850) 765-4451

RECEIVED

AUG 13 2015

August 13, 2015

FL LAND AND WATER
ADJUDICATORY COMMISSION

Ms. Barbara Leighty
Florida Land and Water Adjudicatory Commission
Room 1801, The Capitol
Tallahassee, Florida 32399-0001

RE: Fiddler's Creek Community Development District 1

Dear Ms. Leighty:

Please find enclosed a signed and dated Amended Petition to Correct the Legal Description of the Fiddler's Creek Community Development District 1 by Amendment Without Changing the Boundaries of the District. It was brought to our attention that the original Petition was determined to be insufficient due to its date not being fully noted and to the lengthy delay between the signing of the Petition and its filing with your Commission. Please note that the Amended Petition contains no changes from the original Petition other than the date of execution. We hope that this resolves any concerns about the sufficiency of the Petition. However, if any further actions are necessary, please let us know.

Thank you for your consideration of this information.

Sincerely,


for H. Kenza van Assenderp, III

KvA/srt
Enclosure



WOODWARD, PIRES & LOMBARDO, P.A.

ATTORNEYS AT LAW

July 24, 2015

Via Federal Express
Tracking No. 8081 0601 8290

CRAIG R. WOODWARD
Board Certified: Real Estate

MARK J. WOODWARD
Board Certified: Real Estate

ANTHONY P. PIRES, JR.
Board Certified: City, County,
and Local Government

J. CHRISTOPHER LOMBARDO
Board Certified: Marital
and Family Law

ROBERT E. MURRELL
Of Counsel

DAVID E. LEIGH
Of Counsel

JENNIFER L. DEVRIES

JENNIFER M. TENNEY

LENORE T. BRAKEFIELD

MATTHEW P. FLORES

J. TODD MURRELL

Ken van Assenderp, Esq.
Young, van Assenderp & Qualls, P.A.
216 South Monroe Street
Tallahassee, Florida 32301

Re: Amended Petition To Correct The Legal Description Of The
Fiddler's Creek Community Development District 1 By Amendment Without
Changing The Boundaries Of The District

Dear Ken:

Enclosed please find the above-referenced original document signed
by me and Phillip Brougham as Chairman of the Board for Fiddler's Creek
Community Development District 1.

Thank you and if I can be of further assistance please contact me.

Sincerely,

[Handwritten signature of Anthony P. Pires, Jr., Esq.]
Anthony P. Pires, Jr., Esq.

/lg

Enclosure(s)

Cc: with enclosure(s)
Terry Cole
Chuck Adams

REPLY TO:

3200 TAMiami TRAIL N.
SUITE 200
NAPLES, FL 34103
239-649-6555
239-649-7342 FAX

606 BALD EAGLE DRIVE
SUITE 500
P.O. BOX ONE
MARCO ISLAND, FL 34146
239-394-5161
239-642-6402 FAX

W.WPL-LEGAL.COM

**BEFORE THE
FLORIDA LAND AND WATER ADJUDICATORY COMMISSION**

A Petition to Correct the Legal)
Description of the Fiddler's Creek)
Community Development District 1)
By Amendment Without Changing)
The Boundaries of the District)
_____)

**AMENDED PETITION TO CORRECT THE LEGAL DESCRIPTION OF THE
FIDDLER'S CREEK COMMUNITY DEVELOPMENT DISTRICT 1 BY AMENDMENT
WITHOUT CHANGING THE BOUNDARIES OF THE DISTRICT**

Petitioner, Fiddler's Creek Community Development District 1, a special and single-purpose local government created and chartered by, and established on the property by County ordinance pursuant to, Chapter 190, *Florida Statutes*, and established pursuant further to Florida Land and Water Adjudicatory Commission (hereafter "FLWAC") *Rule 42X-1.001, Florida Administrative Code*, and located in Collier County, Florida (hereafter "District"), hereby petitions the FLWAC, pursuant to the "Uniform Community Development District Act of 1980," Chapter 190, *Florida Statutes*, and specifically section 190.046(1), *Florida Statutes*, to amend the previously amended FLWAC *Rule 42X-1.002*, to correct certain wording in the metes and bounds legal description without changing the boundaries of the District. In support of this Petition, the District states:

1. Purpose; Location and Size.

a. Purpose. The single special purpose of the District is to manage the provision of infrastructure by exercising its general and special powers to acquire, construct, maintain and finance special systems, facilities and services as granted by, and subject to the limitations of, its state-created charter.

b. Location and Size. The District is located within unincorporated Collier County, Florida. **Exhibit 1-A** depicts the general location of the existing District. The District currently contains approximately 1389.77 acres and as a result of this amendment will continue to contain the same acreage because there will be no change in the boundaries. The current metes and bounds legal description of the external boundaries of the District is set forth in **Exhibit 2**.

2. The District does not propose to expand or to contract its boundaries. Rather, the District proposes to correct the description by amending the current legal description of its boundaries because the current metes and bounds legal description of the external boundaries of the District as set forth in **Exhibit 2** contains errors and omissions, none of which affects the boundaries or the acreage. Said errors and omissions are depicted in **Exhibit 1-B** which depicts the general location of the errors in relation to the unchanged boundaries of the District, and set forth in **Exhibit 3** which proposes to make the following corrections to the legal description of the external boundaries of the District: (1) to correct the total area measurement of Parcel 1 from "1687.5109 acres more or less" to "1550.1359 acres more or less" to reflect the existing acreage; (2) to insert the phrase "of the Northeast $\frac{1}{4}$ " in the appropriate location of the legal description of Parcel 1; (3) to insert the line "along the North line of said Section 23, a distance of 218.01 feet; thence leaving said Section line" in the appropriate location of the legal description of the first "less and except" parcel (which is the parcel containing 12.00 acres); and (4) to replace the word "West" with "East" in the appropriate location of the legal description of Parcel 7.

3. The proposed changes to the legal description of the boundaries are to correct scrivener's errors contained in the amended *Rule 42X-1.002, Florida Administrative Code*. The legal boundaries of Parcel 1 were amended in 2003 which resulted in the original area of Parcel 1 being reduced by approximately 137.38 acres from 1687.5109 acres more or less to its current area

of 1550.1359 acres more or less. The "1550.1359 acres more or less" is the measurement that should have been reflected in the legal description following the 2003 amendment. However, the amended rule erroneously retained the original measurement of "1687.5109 acres more or less" as the total acreage for Parcel 1. Also, the phrase "of the Northeast ¼" was omitted from the legal description of Parcel 1 and should be inserted in the appropriate location. Additionally, the legal description of the boundaries of the first "less and except" parcel- the parcel containing 12.00 acres- erroneously omitted a line of text which further describes the boundaries of the first "less and except" parcel. Furthermore, Parcel 7 requires a correction in the legal description as "West" was used rather than the correct "East." The total net acreage is and will remain to be 1389.7739 acres more or less. These changes are solely changes to correct scrivener's errors in the amended rule and they cannot and will not change either the boundaries or the acreage within the boundaries of the District.

4. Landowner Consent. Pursuant to Section 190.046(1)(g), *Florida Statutes*, the consent of landowners within the boundaries of the District is not necessary as "the filing of the petition by the district board of supervisors constitutes consent of the landowners within the district." The proposed changes will not result in any impact on the existing landowners. Therefore, the consent of these existing landowners is not necessary. Furthermore, because there is no change in the boundaries or the acreage within the boundaries of the District, there is no resulting expansion or contraction and, therefore, there is no additional consent of any landowners outside the boundaries of the District needed or required.

5. Future Land Uses. The proposed amendment will not alter the use of the land. Therefore, the land will continue to be used in accordance with the adopted Collier County Comprehensive Plan.

6. District Facilities and Services. These scrivener error changes within the legal description will not necessitate any change in present or future District systems, facilities or services.

7. Statement of Estimated Regulatory Costs. The statement of estimated regulatory costs ("SERC") prepared in accordance with the requirements of Section 120.541, *Florida Statutes* is set forth in **Exhibit 4**. Because the amendments to the legal description to correct scrivener's errors do not change the boundary or the acreage and do not constitute either a contraction or expansion, there is no factual basis that triggers any changes in regulatory costs.

8. Filing Fee. The District has submitted the Petition and the requisite \$1,500 filing fee (in conjunction with this Petition) to Collier County.

9. This Petition to correct by amending the legal description, without changing the boundaries or acreage, of the Fiddler's Creek Community Development District 1 should be granted for the following reasons:

- a. All statements contained in the Petition are true and correct.
- b. Amendment of the legal description of the District without changing the boundaries will not and cannot trigger any changes in land uses, systems, facilities and services planned within the District, as amended, and this amendment is not inconsistent with any applicable element or portion of the state comprehensive plan or of the effective Collier County Comprehensive Plan.
- c. The area of the land within the District will not and cannot change as a result of this amendment to the legal description. Therefore, the District will continue to be of sufficient size and sufficiently compact and sufficiently contiguous to be developable as one functional interrelated community.

d. Because the amendment to the legal description will not and cannot change the boundaries or acreage within the boundaries of the District, the District continues to be the best alternative available for delivering community development services and facilities to the area that has been, is and will be served by the District.

e. Because the amendment to the legal description will not and cannot change the boundaries or acreage within the boundaries of the District, the District's community development services and facilities have not been, are not and will continue not to be incompatible with the capacity and use of existing local and regional community development services and facilities because the amended legal description will not and cannot cause any changes in District services and facilities.

f. Because the amendment to the legal description will not change the boundaries or acreage within the boundaries of the District, the unchanged land area to be served by the District was, continues to be and will remain amenable to separate special-district government.

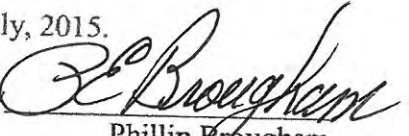
WHEREFORE, Petitioner respectfully requests the Florida Land and Water Adjudicatory Commission to:

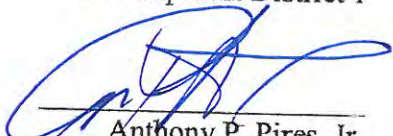
a. refer this Petition to the Board of Supervisors of the Fiddler's Creek Community Development District 1 to conduct a local public hearing pursuant to Section 190.046(1)(d)4, *Florida Statutes*;

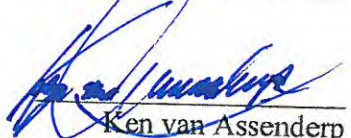
b. consider the full record of the local hearing by the district board, the transcript of the hearing, any resolutions adopted by the Collier County Commissioner if it conducts its optional hearing and the recommendation of the district board of supervisors whether to grant the petition for amendment in accordance with the requirements of Section 190.046(1)(d)4, *Florida Statutes*;

c. grant the Petition and amend FLWAC Rule 42X-1.002, *Florida Administrative Code*, to correct the errors within the current metes and bounds legal description of the District without changing the boundaries or acreage within the boundaries, and without constituting a contraction or an expansion, pursuant to Chapter 190, *Florida Statutes*.

RESPECTFULLY SUBMITTED, this 24th day of July, 2015.

By 
Phillip Brougham
Chairman of the Board for
Fiddler's Creek Community
Development District I


Anthony P. Pires, Jr.
Woodward, Pires & Lombardo, P.A.
3200 North Tamiami Trail Suite 200
Naples, Florida 34103
239-649-6555 Phone
239-649-7342 Fax
apires@wpl-legal.com
Counsel for Petitioner District


Ken van Assenderp
Young, van Assenderp & Qualls, P.A.
216 South Monroe Street
Tallahassee, Florida 32301
850-222-7206 Phone
850-561-6834 Fax
kvanassenderp@yvlaw.net
Special Counsel for Petitioner District

**BEFORE THE
FLORIDA LAND AND WATER ADJUDICATORY COMMISSION**

RECEIVED

JUL 13 2015

FL LAND AND WATER
ADJUDICATORY COMMISSION

A Petition to Correct the Legal)
Description of the Fiddler's Creek)
Community Development District 1)
By Amendment Without Changing)
The Boundaries of the District)
_____)

**PETITION TO CORRECT THE LEGAL DESCRIPTION OF THE FIDDLER'S CREEK
COMMUNITY DEVELOPMENT DISTRICT 1 BY AMENDMENT WITHOUT
CHANGING THE BOUNDARIES OF THE DISTRICT**

Petitioner, Fiddler's Creek Community Development District 1, a special and single-purpose local government created and chartered by, and established on the property by County ordinance pursuant to, Chapter 190, *Florida Statutes*, and established pursuant further to Florida Land and Water Adjudicatory Commission (hereafter "FLWAC") *Rule 42X-1.001, Florida Administrative Code*, and located in Collier County, Florida (hereafter "District"), hereby petitions the FLWAC, pursuant to the "Uniform Community Development District Act of 1980," Chapter 190, *Florida Statutes*, and specifically section 190.046(1), *Florida Statutes*, to amend the previously amended FLWAC *Rule 42X-1.002*, to correct certain wording in the metes and bounds legal description without changing the boundaries of the District. In support of this Petition, the District states:

1. Purpose; Location and Size.

a. Purpose. The single special purpose of the District is to manage the provision of infrastructure by exercising its general and special powers to acquire, construct, maintain and finance special systems, facilities and services as granted by, and subject to the limitations of, its state-created charter.

b. Location and Size. The District is located within unincorporated Collier County, Florida. **Exhibit 1-A** depicts the general location of the existing District. The District currently contains approximately 1389.77 acres and as a result of this amendment will continue to contain the same acreage because there will be no change in the boundaries. The current metes and bounds legal description of the external boundaries of the District is set forth in **Exhibit 2**.

2. The District does not propose to expand or to contract its boundaries. Rather, the District proposes to correct the description by amending the current legal description of its boundaries because the current metes and bounds legal description of the external boundaries of the District as set forth in **Exhibit 2** contains errors and omissions, none of which affects the boundaries or the acreage. Said errors and omissions are depicted in **Exhibit 1-B** which depicts the general location of the errors in relation to the unchanged boundaries of the District, and set forth in **Exhibit 3** which proposes to make the following corrections to the legal description of the external boundaries of the District: (1) to correct the total area measurement of Parcel 1 from “1687.5109 acres more or less” to “1550.1359 acres more or less” to reflect the existing acreage; (2) to insert the phrase “of the Northeast $\frac{1}{4}$ ” in the appropriate location of the legal description of Parcel 1; (3) to insert the line “along the North line of said Section 23, a distance of 218.01 feet; thence leaving said Section line” in the appropriate location of the legal description of the first “less and except” parcel (which is the parcel containing 12.00 acres); and (4) to replace the word “West” with “East” in the appropriate location of the legal description of Parcel 7.

3. The proposed changes to the legal description of the boundaries are to correct scrivener’s errors contained in the amended *Rule 42X-1.002, Florida Administrative Code*. The legal boundaries of Parcel 1 were amended in 2003 which resulted in the original area of Parcel 1 being reduced by approximately 137.38 acres from 1687.5109 acres more or less to its current

area of 1550.1359 acres more or less. The “1550.1359 acres more or less” is the measurement that should have been reflected in the legal description following the 2003 amendment. However, the amended rule erroneously retained the original measurement of “1687.5109 acres more or less” as the total acreage for Parcel 1. Also, the phrase “of the Northeast ¼” was omitted from the legal description of Parcel 1 and should be inserted in the appropriate location. Additionally, the legal description of the boundaries of the first “less and except” parcel- the parcel containing 12.00 acres- erroneously omitted a line of text which further describes the boundaries of the first “less and except” parcel. Furthermore, Parcel 7 requires a correction in the legal description as “West” was used rather than the correct “East.” The total net acreage is and will remain to be 1389.7739 acres more or less. These changes are solely changes to correct scrivener’s errors in the amended rule and they cannot and will not change either the boundaries or the acreage within the boundaries of the District.

4. Landowner Consent. Pursuant to Section 190.046(1)(g), *Florida Statutes*, the consent of landowners within the boundaries of the District is not necessary as “the filing of the petition by the district board of supervisors constitutes consent of the landowners within the district.” The proposed changes will not result in any impact on the existing landowners. Therefore, the consent of these existing landowners is not necessary. Furthermore, because there is no change in the boundaries or the acreage within the boundaries of the District, there is no resulting expansion or contraction and, therefore, there is no additional consent of any landowners outside the boundaries of the District needed or required.

5. Future Land Uses. The proposed amendment will not alter the use of the land. Therefore, the land will continue to be used in accordance with the adopted Collier County Comprehensive Plan.

6. District Facilities and Services. These scrivener error changes within the legal description will not necessitate any change in present or future District systems, facilities or services.

7. Statement of Estimated Regulatory Costs. The statement of estimated regulatory costs (“SERC”) prepared in accordance with the requirements of Section 120.541, *Florida Statutes* is set forth in **Exhibit 4**. Because the amendments to the legal description to correct scrivener’s errors do not change the boundary or the acreage and do not constitute either a contraction or expansion, there is no factual basis that triggers any changes in regulatory costs.

8. Filing Fee. The District has submitted the Petition and the requisite \$1,500 filing fee (in conjunction with this Petition) to Collier County.

9. This Petition to correct by amending the legal description, without changing the boundaries or acreage, of the Fiddler’s Creek Community Development District 1 should be granted for the following reasons:

a. All statements contained in the Petition are true and correct.

b. Amendment of the legal description of the District without changing the boundaries will not and cannot trigger any changes in land uses, systems, facilities and services planned within the District, as amended, and this amendment is not inconsistent with any applicable element or portion of the state comprehensive plan or of the effective Collier County Comprehensive Plan.

c. The area of the land within the District will not and cannot change as a result of this amendment to the legal description. Therefore, the District will continue to be of sufficient size and sufficiently compact and sufficiently contiguous to be developable as one functional interrelated community.

d. Because the amendment to the legal description will not and cannot change the boundaries or acreage within the boundaries of the District, the District continues to be the best alternative available for delivering community development services and facilities to the area that has been, is and will be served by the District.

e. Because the amendment to the legal description will not and cannot change the boundaries or acreage within the boundaries of the District, the District's community development services and facilities have not been, are not and will continue not to be incompatible with the capacity and use of existing local and regional community development services and facilities because the amended legal description will not and cannot cause any changes in District services and facilities.

f. Because the amendment to the legal description will not change the boundaries or acreage within the boundaries of the District, the unchanged land area to be served by the District was, continues to be and will remain amenable to separate special-district government.

WHEREFORE, Petitioner respectfully requests the Florida Land and Water Adjudicatory Commission to:

a. refer this Petition to the Board of Supervisors of the Fiddler's Creek Community Development District 1 to conduct a local public hearing pursuant to Section 190.046(1)(d)4, *Florida Statutes*;

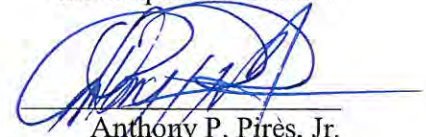
b. consider the full record of the local hearing by the district board, the transcript of the hearing, any resolutions adopted by the Collier County Commissioner if it conducts its optional hearing and the recommendation of the district board of supervisors whether to grant the petition for amendment in accordance with the requirements of Section 190.046(1)(d)4, *Florida Statutes*;

c. grant the Petition and amend FLWAC *Rule 42X-1.002, Florida Administrative Code*, to correct the errors within the current metes and bounds legal description of the District without changing the boundaries or acreage within the boundaries, and without constituting a contraction or an expansion, pursuant to Chapter 190, *Florida Statutes*.

RESPECTFULLY SUBMITTED, this ____ day of March, 2015.

By 

Phillip Brougham
Chairman of the Board for
Fiddler's Creek Community
Development District 1



Anthony P. Pires, Jr.
Woodward, Pires & Lombardo, P.A.
3200 North Tamiami Trail Suite 200
Naples, Florida 34103
239-649-6555 Phone
239-649-7342 Fax
apires@wpl-legal.com
Counsel for Petitioner District



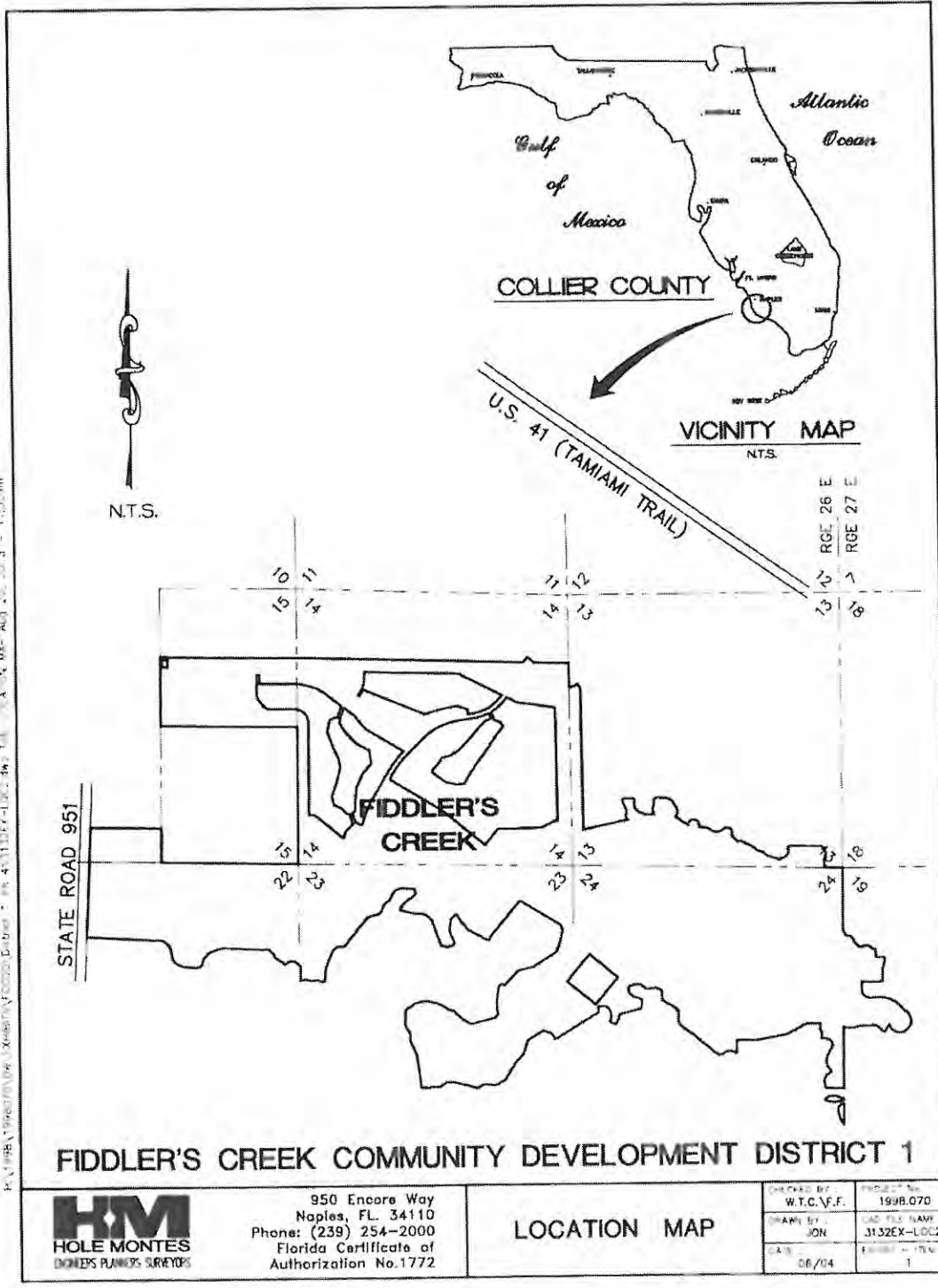
Ken van Assenderp
Young van Assenderp, P.A.
215 South Monroe Street Suite 802
Tallahassee, Florida 32301
850-222-7206 Phone
850-561-6834 Fax
kvanassenderp@yvlaw.net
Special Counsel for Petitioner District

EXHIBIT 1-A

General Location of Fiddler's Creek Community

Development District 1

PLATTENBERG ASSOCIATES, INC. 13000 N.W. 27th Ave., Suite 100, Ft. Lauderdale, FL 33309-4400
 PHONE: (954) 344-1100 FAX: (954) 344-1101



FIDDLER'S CREEK COMMUNITY DEVELOPMENT DISTRICT 1



950 Encore Way
 Naples, FL 34110
 Phone: (239) 254-2000
 Florida Certificate of
 Authorization No. 1772

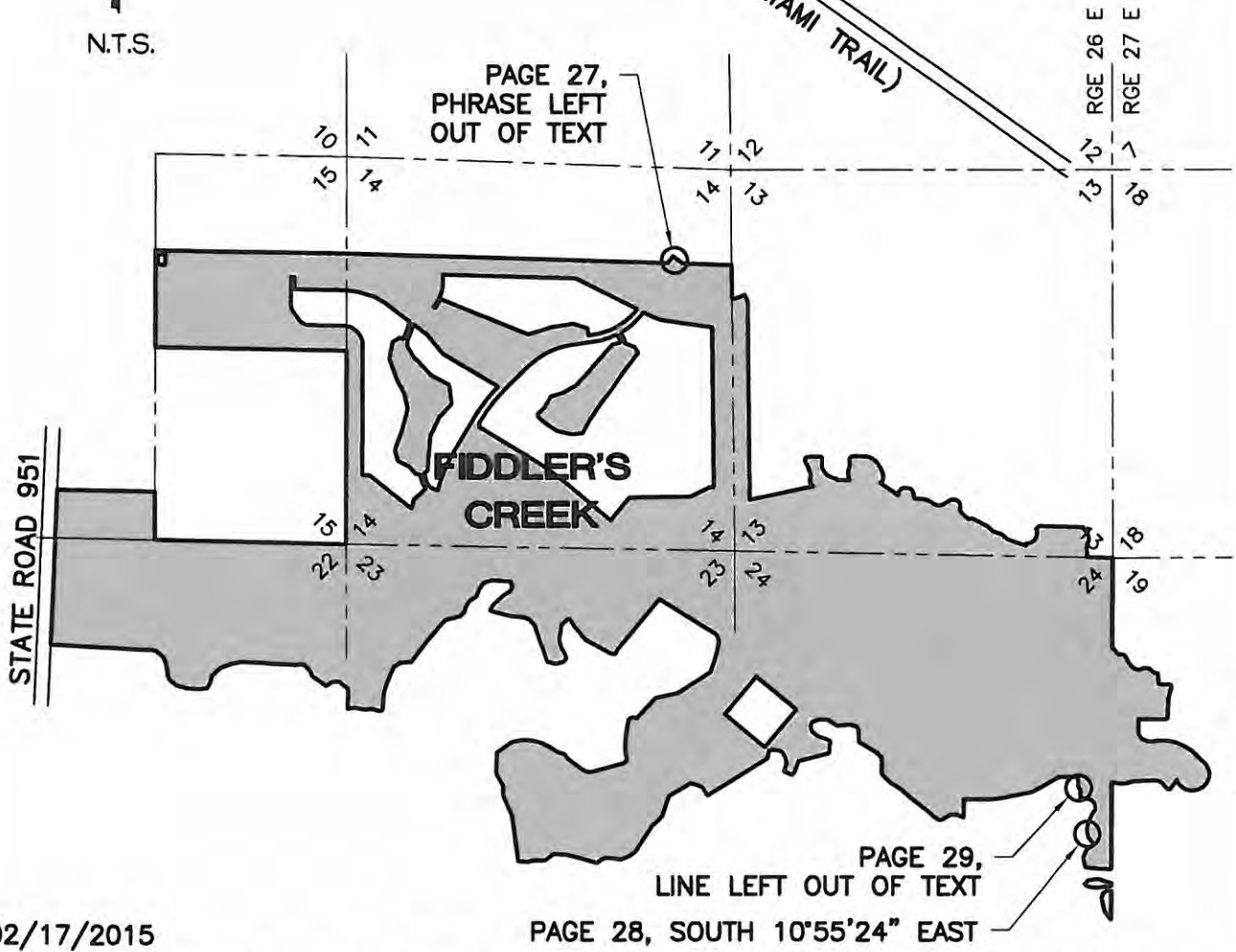
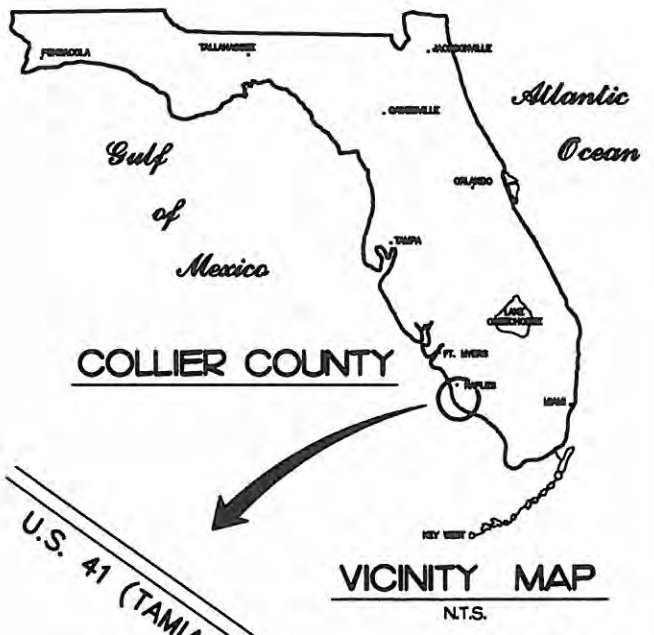
LOCATION MAP

CHECKED BY W.T.C.V.F.F.	PROJECT No. 199B.070
DRAWN BY JON	CAD FILE NAME J132EX-LDC2
DATE 06/04	SHEET - 15 of 1

EXHIBIT 1-B

**Depiction to illustrate the general location of the errors in
relation to the unchanged boundaries as set forth and
described in paragraph 3 of the Petition**

H:\1998\1998070\DW\EXHIBITS\FCCDD\District 1 Ph 4\3132EX-LOC2_1C.dwg Tab: SCRIVENER'S ERRORS Feb 17, 2015 - 12:32pm



02/17/2015

PAGE 28, SOUTH 10°55'24" EAST

FIDDLER'S CREEK COMMUNITY DEVELOPMENT DISTRICT 1



950 Encore Way
 Naples, FL 34110
 Phone: (239) 254-2000
 Florida Certificate of
 Authorization No.1772

Location of
 Scrivener's Errors in the
 C.D.D. Legal Description

CHECKED BY : W.T.C.\F.F.	PROJECT No. 1998.070
DRAWN BY : JON	CAD FILE NAME: 3132EX-LOC2_1B
DATE : 06/04	EXHIBIT - ITEM 1B

EXHIBIT 2

Current Legal Description of District's Boundary

**[only the erroneous descriptions of Parcels 1 and 7 are
included for this Petition]**

Parcel 1

A parcel of land located in Sections 11, 14, 15, 22, 23, 24, and 25 all being in Township 51 South, Range 26 East, Collier County, Florida, being more particularly described as follows: BEGIN at the Northeast corner of Section 22, Township 51 South, Range 26 East, Collier County, Florida; thence run North $88^{\circ}58'51''$ West, along the North line of the Northeast $\frac{1}{4}$ of said Section 22, for a distance of 2738.26 feet to the North $\frac{1}{4}$ corner of said Section 22; thence run North $00^{\circ}18'43''$ East, along the East line of the Southwest $\frac{1}{4}$ of said Section 22, for a distance of 695.26 feet, Thence run N. $88^{\circ}58'11''$ W. for a distance of 1422.07 feet to a point on the Easterly right-of-way line of State Road 951, a 200.00 foot right-of-way; thence run South $02^{\circ}29'39''$ West, along the Easterly right-of-way line of State Road 951, for a distance of 2232.43 feet; thence run South $86^{\circ}54'19''$ East for a distance of 1322.20 feet; thence run South $89^{\circ}27'22''$ East for a distance of 125.79 feet; thence run South $80^{\circ}38'36''$ East for a distance of 86.82 feet; thence run South $48^{\circ}57'39''$ East for a distance of 143.49 feet; thence run South $22^{\circ}38'28''$ East for a distance of 101.19 feet; thence run South $07^{\circ}16'34''$ East for a distance of 159.01 feet; thence run South $22^{\circ}27'03''$ East for a distance of 80.97 feet; thence run South $51^{\circ}50'53''$ East for a distance of 124.40 feet; thence run South $74^{\circ}04'40''$ East for a distance of 144.06 feet; thence run South $85^{\circ}45'26''$ East for a distance of 187.62 feet; thence run North $82^{\circ}02'11''$ East for a distance of 108.47 feet; thence run North $28^{\circ}53'36''$ East for a distance of 104.27 feet; thence run North $10^{\circ}26'56''$ East for a distance of 87.33 feet; thence run North $46^{\circ}09'57''$ East for a distance of 161.84 feet; thence run North $68^{\circ}40'14''$ East for a distance of 191.80 feet; thence run North $79^{\circ}08'54''$ East for a distance of 121.22 feet; thence run South $87^{\circ}33'02''$ East for a distance of 275.66 feet; thence run South $85^{\circ}36'34''$ East for a distance of 196.37 feet; thence run South $87^{\circ}39'51''$ East for a distance of 185.04 feet; thence run South $87^{\circ}21'43''$ East for a distance of 105.83 feet; thence run North $85^{\circ}51'57''$ East for a distance of 86.75 feet; thence run South $87^{\circ}50'25''$ East for a distance of 53.97 feet; thence run South $43^{\circ}21'06''$ East for a distance of 96.83 feet; thence run South $39^{\circ}51'17''$ East for a distance of 55.10 feet; thence run South $12^{\circ}45'05''$ East for a distance of 48.21 feet; thence run South $54^{\circ}17'48''$ East for a distance of 252.73 feet; thence run North $55^{\circ}30'51''$ East for a distance of 83.75 feet; thence run North $74^{\circ}56'13''$ East for a distance of 64.15 feet; thence run South $82^{\circ}07'55''$ East for a distance of 60.59 feet; thence run South $51^{\circ}36'21''$ East for a distance of 159.30 feet; thence run South $00^{\circ}11'44''$ West for a distance of 120.56 feet; thence run South $02^{\circ}12'06''$ West for a distance of 166.85 feet; thence run North $80^{\circ}34'08''$ East for a distance of 106.80 feet; thence run South $77^{\circ}52'52''$ East for a distance of 122.93 feet; thence run North

85°11'20" East for a distance of 115.84 feet; thence run South 73°31'25" East for a distance of 106.53 feet; thence run North 78°58'26" East for a distance of 51.97 feet; thence run North 05°41'54" East for a distance of 125.98 feet; thence run North 01°41'54" East for a distance of 77.72 feet; thence run North 15°43'51" East for a distance of 164.05 feet; thence run North 21°55'44" East for a distance of 141.05 feet; thence run North 23°51'20" East for a distance of 142.54 feet; thence run North 53°47'38" East for a distance of 116.07 feet; thence run North 88°01'01" East for a distance of 145.07 feet; thence run North 38°00'59" East for a distance of 369.42 feet; thence run North 39°43'19" East for a distance of 299.43 feet; thence run North 44°48'34" East for a distance of 108.44 feet; thence run North 74°20'58" East for a distance of 101.17 feet; thence run North 77°28'10" East for a distance of 117.54 feet; thence run North 41°29'16" East for a distance of 102.86 feet; thence run North 16°25'45" East for a distance of 68.07 feet; thence run North 32°16'13" East for a distance of 99.28 feet; thence run North 56°07'35" East for a distance of 115.20 feet; thence run North 22°53'12" East for a distance of 132.57 feet; thence run North 34°55'40" East for a distance of 81.02 feet; thence run North 67°14'28" East for a distance of 68.26 feet; thence run North 76°07'18" East for a distance of 77.37 feet; thence run South 86°19'59" East for a distance of 263.41 feet; thence run South 14°15'46" East for a distance of 83.69 feet; thence run South 23°58'59" West for a distance of 58.61 feet; thence run South 56°50'17" West for a distance of 141.77 feet; thence run South 48°14'20" West for a distance of 110.87 feet; thence run South 46°59'04" West for a distance of 86.08 feet; thence run South 24°17'17" West for a distance of 78.68 feet; thence run South 59°03'57" East for a distance of 32.26 feet; thence run South 76°14'25" East for a distance of 287.74 feet; thence run South 87°00'56" East for a distance of 151.16 feet; thence run South 68°28'26" East for a distance of 115.50 feet; thence run South 43°13'27" East for a distance of 112.77 feet; thence run South 18°34'02" East for a distance of 220.03 feet; thence run South 21°18'18" East for a distance of 172.00 feet; thence run South 18°33'08" East for a distance of 163.52 feet; thence run South 76°44'26" East for a distance of 125.93 feet; thence run North 74°26'22" East for a distance of 115.09 feet; thence run North 47°34'17" East for a distance of 55.95 feet; thence run North 12°06'43" West for a distance of 69.72 feet; thence run North 31°18'44" West for a distance of 100.54 feet; thence run North 16°38'57" West for a distance of 133.88 feet; thence run North 09°53'00" East for a distance of 213.52 feet; thence run North 48°28'23" East for a distance of 119.96 feet; thence run North 87°30'26" East for a distance of 33.64 feet; thence run South 32°37'51" East for a distance of 138.09 feet; thence run South 40°52'24" East for a distance of 125.01 feet; thence run South 39°17'22" East for a distance of

115.06 feet; thence run South 62°18'24" East for a distance of 145.81 feet; thence run South 61°21'50" East for a distance of 121.40 feet; thence run South 59°49'44" East for a distance of 115.57 feet; thence run South 74°50'34" East for a distance of 94.71 feet; thence run North 24°24'43" East for a distance of 91.83 feet; thence run North 40°52'29" East for a distance of 247.62 feet; thence run North 40°23'40" East for a distance of 276.26 feet; thence run North 39°53'20" East for a distance of 411.53 feet; thence run South 58°13'26" East for a distance of 962.09 feet; thence run South 19°09'18" East for a distance of 96.31 feet; thence run South 08°45'22" West for a distance of 121.08 feet; thence run South 13°25'07" West for a distance of 159.04 feet; thence run South 20°02'48" West for a distance of 189.88 feet; thence run South 57°19'10" West for a distance of 559.88 feet; thence run South 77°05'05" West for a distance of 327.57 feet; thence run South 43°14'14" West for a distance of 401.58 feet; thence run North 66°08'10" West for a distance of 54.49 feet; thence run South 64°07'14" West for a distance of 44.31 feet; thence run South 48°23'22" West for a distance of 35.08 feet; thence run South 11°10'06" West for a distance of 174.79 feet; thence run South 04°12'55" West for a distance of 151.70 feet; thence run South 00°26'51" East for a distance of 131.06 feet; thence run South 07°57'23" East for a distance of 52.02 feet; thence run South 05°32'11" East for a distance of 73.70 feet; thence run South 39°42'25" West for a distance of 60.13 feet; thence run South 75°24'24" West for a distance of 513.63 feet; thence run North 71°25'16" West for a distance of 78.08 feet; thence run North 54°31'46" West for a distance of 292.73 feet; thence run North 36°53'16" West for a distance of 88.54 feet; thence run North 75°02'38" West for a distance of 101.42 feet; thence run North 58°07'21" West for a distance of 145.39 feet; thence run North 63°16'52" West for a distance of 100.54 feet; thence run North 70°16'01" West for a distance of 52.57 feet; thence run North 76°18'47" West for a distance of 139.12 feet; thence run North 88°18'46" West for a distance of 118.58 feet; thence run South 78°25'37" West for a distance of 120.58 feet; thence run South 70°42'34" West for a distance of 58.35 feet; thence run South 54°33'15" West for a distance of 236.73 feet; thence run South 01°33'17" West for a distance of 304.71 feet; thence run South 30°08'16" East for a distance of 194.40 feet; thence run South 01°31'06" West for a distance of 139.28 feet; thence run South 24°09'25" East for a distance of 317.35 feet; thence run South 07°39'57" East for a distance of 618.63 feet; thence run South 05°14'32" East for a distance of 48.49 feet; thence run South 86°37'33" East for a distance of 144.20 feet; thence run North 74°58'46" East for a distance of 84.50 feet; thence run North 89°49'58" East for a distance of 166.94 feet; thence run North 54°40'25" East for a distance of 155.08 feet; thence run South 87°04'16" East for a distance of 183.90 feet; thence run South

75°30'01" East for a distance of 292.56 feet; thence run South 74°07'29" East for a distance of 164.37 feet; thence run North 53°12'13" East for a distance of 77.41 feet; thence run North 71°22'37" East for a distance of 85.20 feet; thence run South 85°53'26" East for a distance of 92.10 feet; thence run South 83°23'30" East for a distance of 128.98 feet; thence run North 68°54'10" East for a distance of 100.70 feet; thence run North 55°32'22" East for a distance of 148.01 feet; thence run North 32°25'17" East for a distance of 235.05 feet; thence run North 33°14'22" East for a distance of 199.06 feet; thence run North 48°38'03" East for a distance of 111.62 feet; thence run North 40°09'31" East for a distance of 96.63 feet; thence run North 18°03'03" East for a distance of 285.56 feet; thence run North 58°55'34" East for a distance of 367.04 feet; thence run South 72°39'46" East for a distance of 90.19 feet; thence run South 68°05'01" East for a distance of 88.10 feet; thence run South 32°29'50" East for a distance of 134.26 feet; thence run North 58°20'15" East for a distance of 1006.12 feet; thence run North 08°49'07" East for a distance of 121.76 feet; thence run North 86°01'20" East for a distance of 76.03 feet; thence run South 81°56'11" East for a distance of 62.99 feet; thence run South 62°22'55" East for a distance of 61.06 feet; thence run South 28°55'42" East for a distance of 96.72 feet; thence run South 07°05'01" East for a distance of 98.49 feet; thence run South 20°24'01" West for a distance of 97.27 feet; thence run South 64°30'14" East for a distance of 119.77 feet; thence run North 42°57'49" East for a distance of 68.57 feet; thence run North 19°23'04" East for a distance of 158.14 feet; thence run North 75°28'14" East for a distance of 446.92 feet; thence run North 06°56'07" East for a distance of 178.75 feet; thence run North 66°12'10" West for a distance of 63.59 feet; thence run North 71°24'18" West for a distance of 123.29 feet; thence run North 50°53'00" West for a distance of 112.15 feet; thence run North 16°04'21" West for a distance of 86.40 feet; thence run North 28°52'24" East for a distance of 62.66 feet; thence run North 69°42'26" East for a distance of 91.21 feet; thence run North 88°57'04" East for a distance of 137.96 feet; thence run South 51°15'23" East for a distance of 66.98 feet; thence run South 57°59'46" East for a distance of 90.38 feet; thence run North 83°57'39" East for a distance of 185.60 feet; thence run South 69°53'36" East for a distance of 103.27 feet; thence run South 33°27'20" East for a distance of 47.82 feet; thence run South 01°07'11" East for a distance of 176.02 feet; thence run South 57°10'59" East for a distance of 90.42 feet; thence run South 59°52'00" East for a distance of 215.96 feet; thence run South 40°50'50" East for a distance of 100.90 feet; thence run South 01°41'10" West for a distance of 221.55 feet; thence run South 44°25'43" East for a distance of 177.22 feet; thence run South 57°17'08" East for a distance of 194.66 feet; thence run South 49°41'29" East for a distance of

234.47 feet; thence run South $51^{\circ}45'12''$ East for a distance of 285.65 feet; thence run South $46^{\circ}48'39''$ East for a distance of 77.27 feet; thence run South $55^{\circ}26'25''$ East for a distance of 87.85 feet; thence run North $83^{\circ}37'01''$ East for a distance of 54.43 feet; thence run North $59^{\circ}38'02''$ East for a distance of 133.38 feet; thence run North $86^{\circ}08'02''$ East for a distance of 77.48 feet; thence run South $67^{\circ}01'55''$ East for a distance of 118.58 feet; thence run South $45^{\circ}08'14''$ East for a distance of 2560.69 feet; thence run North $29^{\circ}52'54''$ East for a distance of 85.21 feet; thence run North $27^{\circ}30'00''$ East for a distance of 86.22 feet; thence run North $25^{\circ}35'58''$ East for a distance of 48.08 feet; thence run North $21^{\circ}40'44''$ East for a distance of 96.89 feet; thence run North $69^{\circ}44'52''$ West for a distance of 38.61 feet; thence run South $75^{\circ}26'58''$ West for a distance of 151.66 feet; thence run North $09^{\circ}04'17''$ West for a distance of 117.55 feet; thence run North $12^{\circ}06'14''$ East for a distance of 74.75 feet; thence run North $46^{\circ}03'43''$ East for a distance of 74.51 feet; thence run North $12^{\circ}46'58''$ West for a distance of 32.83 feet; thence run North $19^{\circ}55'33''$ West for a distance of 74.92 feet; thence run South $32^{\circ}11'57''$ West for a distance of 85.42 feet; thence run South $69^{\circ}25'44''$ West for a distance of 67.21 feet; thence run North $65^{\circ}02'17''$ West for a distance of 75.05 feet; thence run North $86^{\circ}16'33''$ West for a distance of 109.50 feet; thence run South $69^{\circ}48'24''$ West for a distance of 95.29 feet; thence run North $31^{\circ}09'56''$ West for a distance of 62.54 feet; thence run North $01^{\circ}12'06''$ West for a distance of 153.58 feet; thence run North $36^{\circ}23'56''$ East for a distance of 106.80 feet; thence run North $10^{\circ}55'24''$ West for a distance of 140.47 feet; thence run North $22^{\circ}37'48''$ East for a distance of 51.15 feet; thence run North $37^{\circ}19'10''$ East for a distance of 162.48 feet; thence run North $19^{\circ}33'02''$ East for a distance of 118.95 feet; thence run North $08^{\circ}08'12''$ East for a distance of 108.72 feet; thence run North $04^{\circ}59'51''$ West for a distance of 137.15 feet; thence run North $20^{\circ}30'53''$ East for a distance of 147.93 feet; thence run North $03^{\circ}46'25''$ East for a distance of 148.33 feet; thence run North $17^{\circ}32'07''$ West for a distance of 160.04 feet; thence run North $15^{\circ}13'39''$ West for a distance of 140.97 feet; thence run North $00^{\circ}05'49''$ West for a distance of 73.02 feet; thence run North $25^{\circ}39'35''$ East for a distance of 96.53 feet; thence run North $59^{\circ}22'21''$ East for a distance of 73.73 feet; thence run South $40^{\circ}21'48''$ East for a distance of 52.95 feet; thence run South $01^{\circ}53'33''$ West for a distance of 116.69 feet; thence run South $82^{\circ}33'24''$ East for a distance of 120.72 feet; thence run South $63^{\circ}38'53''$ East for a distance of 64.07 feet; thence run South $44^{\circ}52'32''$ East for a distance of 54.42 feet; thence run South $10^{\circ}29'59''$ East for a distance of 79.18 feet; thence run South $37^{\circ}18'09''$ West for a distance of 50.11 feet; thence run South $29^{\circ}46'39''$ West for a distance of 75.80 feet; thence run South $25^{\circ}22'43''$ West for a distance of 103.06 feet; thence run South

10°56'20" West for a distance of 105.37 feet; thence run South 10°07'11" East for a distance of 107.10 feet; thence run South 42°29'24" East for a distance of 116.91 feet; thence run South 08°16'17" West for a distance of 34.66 feet; thence run South 60°16'31" West for a distance of 106.48 feet; thence run South 23°42'39" West for a distance of 130.40 feet; thence run South 08°54'48" East for a distance of 85.19 feet; thence run South 20°38'43" East for a distance of 62.59 feet; thence run South 85°18'35" East for a distance of 164.23 feet; thence run South 88°28'10" East for a distance of 201.60 feet; to a point on the East line of Section 24, Township 51 South, Range 26 East, Collier County, Florida; thence run North 00°15'28" East, along the East line of said Section 24, for a distance of 4476.41 feet to the Northeast corner of said Section 24; thence run North 88°58'55" West, along the North line of the Northeast ¼ of said Section 24, for a distance of 2713.71 feet to the North ¼ corner of said Section 24; thence run North 88°59'02" West, along the North line of the Northwest ¼ of said Section 24, for a distance of 2713.25 feet to the Northwest corner of said Section 24; thence run North 00°25'53" West, along the East line of the Southeast ¼ of Section 14, Township 51 South, Range 26 East, for a distance of 2749.82 feet to the East ¼ Corner of said Section 14; thence continue North 00°25'53" West, along the East line of the Southeast ¼ of the Northeast ¼ of said Section 14, for a distance of 1374.91 feet to the Southeast corner of the Northeast ¼ of the Northeast ¼ of said Section 14; thence run North 88°20'09" West, along the South line of the East ½ of the Northeast ¼ of the Northeast ¼ of said Section 14, for a distance of 692.50 feet to the Southwest corner of the East ½ of the Northeast ¼ of said Section 14; thence run North 52°51'27" West for a distance of 173.20 feet; thence run South 37°08'33" West for a distance of 123.43 feet to a point on the South line of the North ¼ of said Section 14; thence run North 88°20'10" West, along the South line of the North ¼ of said Section 14, for a distance of 4634.68 feet to the Southwest corner of the Northwest ¼ of the Northwest ¼ of said Section 14; thence run North 89°13'52" West, along the North line of the South ½ of the Northeast ¼ of Section 15, Township 51 South, Range 26 East, for a distance of 2738.98 feet to the Northwest corner of the South ½ of the Northeast ¼ of said Section 15; thence run South 00°18'43" West, along the West line of the South ½ of the Northeast ¼ of said Section 15, for a distance of 1392.96 feet to the center of said Section 15; thence run South 89°06'35" East, along the South line of the Northeast ¼ of said Section 15, for a distance of 2739.04 feet to the East ¼ corner of said Section 15; thence run South 00°19'46" West, along the East line of the Southeast ¼ of said Section 15, for a distance of 2787.36 feet to the Southeast corner of said Section 15 and the POINT OF BEGINNING; containing 1687.5109 acres, more or less.

Parcel No. 7

That certain parcel of land, lying in Sections 24 and 25, Township 51 South, Range 26 East, Collier County, Florida, being more particularly described as follows: Commence at the Northeast boundary corner of said Section 24, thence along the East boundary of said Section 24 South $00^{\circ}15'28''$ West a distance of 4,476.41 feet to a point on said boundary; thence leaving said East boundary North $88^{\circ}28'10''$ West a distance of 201.60 feet; thence North $85^{\circ}18'35''$ West a distance of 164.23 feet; thence North $20^{\circ}38'43''$ West a distance of 62.59 feet; thence North $08^{\circ}54'48''$ West a distance of 85.19 feet; thence North $23^{\circ}42'39''$ East a distance of 130.40 feet; thence North $60^{\circ}16'31''$ East a distance of 106.48 feet; thence North $08^{\circ}16'17''$ East a distance of 34.66 feet; thence North $42^{\circ}29'24''$ West a distance of 116.91 feet; thence North $10^{\circ}07'11''$ West a distance of 107.10 feet; thence North $10^{\circ}56'20''$ East a distance of 105.37 feet, thence North $25^{\circ}22'43''$ East a distance of 103.06 feet; thence North $29^{\circ}46'39''$ East a distance of 75.80 feet; thence North $37^{\circ}18'09''$ East a distance of 50.11 feet; thence North $10^{\circ}29'59''$ West a distance of 79.18 feet; thence North $44^{\circ}52'32''$ West a distance of 54.42 feet; thence North $63^{\circ}38'53''$ West a distance of 64.07 feet; thence North $82^{\circ}33'24''$ West a distance of 120.72 feet; thence North $01^{\circ}53'33''$ East a distance of 116.69 feet; thence North $40^{\circ}21'48''$ West a distance of 52.95 feet to the POINT OF BEGINNING of the parcel of land hereinafter described; thence South $59^{\circ}22'21''$ West a distance of 73.73 feet; thence South $25^{\circ}39'35''$ West a distance of 95.53 feet (96.63 Calculated); thence South $00^{\circ}05'49''$ East a distance of 73.02 feet; thence South $15^{\circ}13'39''$ East a distance of 140.97 feet; thence South $17^{\circ}32'07''$ East a distance of 160.04 feet; thence South $03^{\circ}46'25''$ West a distance of 148.33 feet; thence South $20^{\circ}30'53''$ West a distance of 147.93 feet; thence South $04^{\circ}59'51''$ East a distance of 137.15 feet; thence South $08^{\circ}08'12''$ West a distance of 108.72 feet; thence South $19^{\circ}33'02''$ West a distance of 118.95 feet; thence South $37^{\circ}19'10''$ West a distance of 162.48 feet; thence South $22^{\circ}37'48''$ West a distance of 51.15 feet; thence South $10^{\circ}55'24''$ West a distance of 140.47 feet; thence South $36^{\circ}23'56''$ West a distance of 106.80 feet; thence South $01^{\circ}12'06''$ East a distance of 153.58 feet; thence South $31^{\circ}09'56''$ East a distance of 62.54 feet; thence North $69^{\circ}48'24''$ East a distance of 95.29 feet; thence South $86^{\circ}16'33''$ East a distance of 109.50 feet; thence South $65^{\circ}02'17''$ East a distance of 75.05 feet; thence North $69^{\circ}25'44''$ East a distance of 67.21 feet; thence North $32^{\circ}11'57''$ East a distance of 85.42 feet; thence South $19^{\circ}55'33''$ East a distance of 74.92 feet; thence South $12^{\circ}46'58''$ East a distance of 32.83 feet; thence South $46^{\circ}03'43''$ West a distance of 74.51 feet; thence South $12^{\circ}06'14''$ West a distance of 74.75 feet; thence South $09^{\circ}04'17''$ East a distance of 117.55 feet; thence North $75^{\circ}26'58''$ East a distance of 151.66 feet; thence South $69^{\circ}44'52''$ East

a distance of 38.61 feet; thence South 21°40'44" West a distance of 96.89 feet; thence South 25°35'58" West a distance of 48.08 feet; thence South 27°30'00" West a distance of 86.22 feet; thence South 29°52'54" West a distance of 85.21 feet; thence North 45°08'14" West a distance of 2,560.69 feet; thence North 00°15'28" East a distance of 265.00 feet; thence South 89°44'32" East a distance of 375.00 feet; thence North 84°04'19" East a distance of 149.18 feet; thence North 79°01'56" East a distance of 484.64 feet; thence North 61°23'47" East a distance of 447.94 feet; thence South 89°44'32" East a distance of 264.73 feet; thence South 00°15'28" West a distance of 141.70 feet to the POINT OF BEGINNING. Containing 43.00 acres, more or less.

LESS AND EXCEPT THEREFROM PROPERTY CONVEYED TO THE SCHOOL BOARD OF COLLIER COUNTY, FLORIDA, AS RECORDED IN OFFICIAL RECORDS BOOK 1495, PAGES 384, 385 AND 387, AS MORE PARTICULARLY DESCRIBED AS FOLLOWS:

That certain parcel of land lying in and being a part of Sections 23 and 24, Township 51 South, Range 26 East, Collier County, Florida, being more particularly described as follows:

Commence at the Northeast corner of said Section 23; thence run North 88°58'53" West, run South 39°46'43" West a distance of 711.68 feet; thence run South 50°13'17" East a distance of 1515.63 feet; thence run South 39°46'43" West a distance of 1,050.00 feet; thence run South 50°13'17" East a distance of 50.00 feet to the POINT OF BEGINNING of the parcel of land hereinafter described; thence continue South 50°13'17" East a distance of 739.75 feet; thence run North 39°46'43" East a distance of 706.62 feet; thence run North 50°13'17" West a distance of 739.75 feet; thence run South 39°46'43" West a distance of 706.62 feet to the POINT OF BEGINNING. Containing 12.00 acres, more or less.

LESS AND EXCEPT THEREFROM PROPERTY CONVEYED TO BOARD OF COUNTY COMMISSIONERS OF COLLIER COUNTY, FLORIDA, AS RECORDED IN OFFICIAL RECORDS BOOK 1755, PAGE 361, AS MORE PARTICULARLY DESCRIBED AS FOLLOWS:

All that part of the Northeast ¼ of Section 15, Township 51 South, Range 26 East, Collier County, Florida and being more particularly described as follows:

Commencing at the Southwesterly most corner of Championship Drive, Marco Shores Unit 30 Golf Course, Plat Book 17, pages 98 through 103, Collier County, Florida; thence along the Southerly line of said Championship Drive South 89°13'53" East 35.40 feet to the Point of Beginning of the parcel herein described; thence continue along said line South 89°13'52" East 109.79 feet; thence leaving said line South 00°18'43" West 153.94 feet; thence North 86°07'06"

West 110.00 feet; thence North 00°18'43" East 147.96 feet to the Point of Beginning. Containing 0.38 acres, more or less.

LESS AND EXCEPT

ALL THAT PORTION OF GOLF COURSE PARCELS 1, 2, 3 AND 4 "MARCO SHORES UNIT 30 GOLF COURSE", AS SHOWN ON THE PLAT THEREOF, RECORDED IN PLAT BOOK 17, AT PAGES 98 THROUGH 103 OF THE PUBLIC RECORDS OF COLLIER COUNTY, FLORIDA. CONTAINING 243.96 ACRES, MORE OR LESS.

Subject to easements, reservations or restrictions of record.

Net Property Acreage = 1389.7739 Acres, More or Less.

Bearings shown hereon refer to the North line of the Northeast ¼ of Section 22, Township 51 South, Range 26 East, Collier County, Florida, as being North 88°58'51" West.

Property Description for Parcel 1 is composed entirely from that certain map titled MARCO SHORES UNIT 30 BOUNDARY MAP created by the Deltona Corporation -- Dept. of Real Estate Services in July 1989 and revised November 20, 1989 and again September 24, 1991 as provided by Gulf Bay Development Inc. and has been prepared without benefit of survey.

Property Descriptions for Parcels 2 and 3 are based on Exhibit "A" of the SPECIAL WARRANTY DEED as recorded in Official Record Book 1911 Page 144 Et. Seq. of the Public Records of Collier County, Florida and has been prepared without benefit of survey.

These descriptions of all Parcels shown hereon are intended only as representations of specific data in the above referenced documents and not intended as certification of actual field locations.

EXHIBIT 3

Proposed Amended Legal Description of District's Boundary
(emphasis added to amended portions)

Parcel 1

A parcel of land located in Sections 11, 14, 15, 22, 23, 24, and 25 all being in Township 51 South, Range 26 East, Collier County, Florida, being more particularly described as follows: BEGIN at the Northeast corner of Section 22, Township 51 South, Range 26 East, Collier County, Florida; thence run North $88^{\circ}58'51''$ West, along the North line of the Northeast $\frac{1}{4}$ of said Section 22, for a distance of 2738.26 feet to the North $\frac{1}{4}$ corner of said Section 22; thence run North $00^{\circ}18'43''$ East, along the East line of the Southwest $\frac{1}{4}$ of said Section 22, for a distance of 695.26 feet, Thence run N. $88^{\circ}58'11''$ W. for a distance of 1422.07 feet to a point on the Easterly right-of-way line of State Road 951, a 200.00 foot right-of-way; thence run South $02^{\circ}29'39''$ West, along the Easterly right-of-way line of State Road 951, for a distance of 2232.43 feet; thence run South $86^{\circ}54'19''$ East for a distance of 1322.20 feet; thence run South $89^{\circ}27'22''$ East for a distance of 125.79 feet; thence run South $80^{\circ}38'36''$ East for a distance of 86.82 feet; thence run South $48^{\circ}57'39''$ East for a distance of 143.49 feet; thence run South $22^{\circ}38'28''$ East for a distance of 101.19 feet; thence run South $07^{\circ}16'34''$ East for a distance of 159.01 feet; thence run South $22^{\circ}27'03''$ East for a distance of 80.97 feet; thence run South $51^{\circ}50'53''$ East for a distance of 124.40 feet; thence run South $74^{\circ}04'40''$ East for a distance of 144.06 feet; thence run South $85^{\circ}45'26''$ East for a distance of 187.62 feet; thence run North $82^{\circ}02'11''$ East for a distance of 108.47 feet; thence run North $28^{\circ}53'36''$ East for a distance of 104.27 feet; thence run North $10^{\circ}26'56''$ East for a distance of 87.33 feet; thence run North $46^{\circ}09'57''$ East for a distance of 161.84 feet; thence run North $68^{\circ}40'14''$ East for a distance of 191.80 feet; thence run North $79^{\circ}08'54''$ East for a distance of 121.22 feet; thence run South $87^{\circ}33'02''$ East for a distance of 275.66 feet; thence run South $85^{\circ}36'34''$ East for a distance of 196.37 feet; thence run South $87^{\circ}39'51''$ East for a distance of 185.04 feet; thence run South $87^{\circ}21'43''$ East for a distance of 105.83 feet; thence run North $85^{\circ}51'57''$ East for a distance of 86.75 feet; thence run South $87^{\circ}50'25''$ East for a distance of 53.97 feet; thence run South $43^{\circ}21'06''$ East for a distance of 96.83 feet; thence run South $39^{\circ}51'17''$ East for a distance of 55.10 feet; thence run South $12^{\circ}45'05''$ East for a distance of 48.21 feet; thence run South $54^{\circ}17'48''$ East for a distance of 252.73 feet; thence run North $55^{\circ}30'51''$ East for a distance of 83.75 feet; thence run North $74^{\circ}56'13''$ East for a distance of 64.15 feet; thence run South $82^{\circ}07'55''$ East for a distance of 60.59 feet; thence run South $51^{\circ}36'21''$ East for a distance of 159.30 feet; thence run South $00^{\circ}11'44''$ West for a distance of 120.56 feet; thence run South $02^{\circ}12'06''$ West for a distance of 166.85 feet; thence run North $80^{\circ}34'08''$ East for a distance of 106.80 feet; thence run South $77^{\circ}52'52''$ East for a distance of 122.93 feet; thence run North

85°11'20" East for a distance of 115.84 feet; thence run South 73°31'25" East for a distance of 106.53 feet; thence run North 78°58'26" East for a distance of 51.97 feet; thence run North 05°41'54" East for a distance of 125.98 feet; thence run North 01°41'54" East for a distance of 77.72 feet; thence run North 15°43'51" East for a distance of 164.05 feet; thence run North 21°55'44" East for a distance of 141.05 feet; thence run North 23°51'20" East for a distance of 142.54 feet; thence run North 53°47'38" East for a distance of 116.07 feet; thence run North 88°01'01" East for a distance of 145.07 feet; thence run North 38°00'59" East for a distance of 369.42 feet; thence run North 39°43'19" East for a distance of 299.43 feet; thence run North 44°48'34" East for a distance of 108.44 feet; thence run North 74°20'58" East for a distance of 101.17 feet; thence run North 77°28'10" East for a distance of 117.54 feet; thence run North 41°29'16" East for a distance of 102.86 feet; thence run North 16°25'45" East for a distance of 68.07 feet; thence run North 32°16'13" East for a distance of 99.28 feet; thence run North 56°07'35" East for a distance of 115.20 feet; thence run North 22°53'12" East for a distance of 132.57 feet; thence run North 34°55'40" East for a distance of 81.02 feet; thence run North 67°14'28" East for a distance of 68.26 feet; thence run North 76°07'18" East for a distance of 77.37 feet; thence run South 86°19'59" East for a distance of 263.41 feet; thence run South 14°15'46" East for a distance of 83.69 feet; thence run South 23°58'59" West for a distance of 58.61 feet; thence run South 56°50'17" West for a distance of 141.77 feet; thence run South 48°14'20" West for a distance of 110.87 feet; thence run South 46°59'04" West for a distance of 86.08 feet; thence run South 24°17'17" West for a distance of 78.68 feet; thence run South 59°03'57" East for a distance of 32.26 feet; thence run South 76°14'25" East for a distance of 287.74 feet; thence run South 87°00'56" East for a distance of 151.16 feet; thence run South 68°28'26" East for a distance of 115.50 feet; thence run South 43°13'27" East for a distance of 112.77 feet; thence run South 18°34'02" East for a distance of 220.03 feet; thence run South 21°18'18" East for a distance of 172.00 feet; thence run South 18°33'08" East for a distance of 163.52 feet; thence run South 76°44'26" East for a distance of 125.93 feet; thence run North 74°26'22" East for a distance of 115.09 feet; thence run North 47°34'17" East for a distance of 55.95 feet; thence run North 12°06'43" West for a distance of 69.72 feet; thence run North 31°18'44" West for a distance of 100.54 feet; thence run North 16°38'57" West for a distance of 133.88 feet; thence run North 09°53'00" East for a distance of 213.52 feet; thence run North 48°28'23" East for a distance of 119.96 feet; thence run North 87°30'26" East for a distance of 33.64 feet; thence run South 32°37'51" East for a distance of 138.09 feet; thence run South 40°52'24" East for a distance of 125.01 feet; thence run South 39°17'22" East for a distance of

115.06 feet; thence run South 62°18'24" East for a distance of 145.81 feet; thence run South 61°21'50" East for a distance of 121.40 feet; thence run South 59°49'44" East for a distance of 115.57 feet; thence run South 74°50'34" East for a distance of 94.71 feet; thence run North 24°24'43" East for a distance of 91.83 feet; thence run North 40°52'29" East for a distance of 247.62 feet; thence run North 40°23'40" East for a distance of 276.26 feet; thence run North 39°53'20" East for a distance of 411.53 feet; thence run South 58°13'26" East for a distance of 962.09 feet; thence run South 19°09'18" East for a distance of 96.31 feet; thence run South 08°45'22" West for a distance of 121.08 feet; thence run South 13°25'07" West for a distance of 159.04 feet; thence run South 20°02'48" West for a distance of 189.88 feet; thence run South 57°19'10" West for a distance of 559.88 feet; thence run South 77°05'05" West for a distance of 327.57 feet; thence run South 43°14'14" West for a distance of 401.58 feet; thence run North 66°08'10" West for a distance of 54.49 feet; thence run South 64°07'14" West for a distance of 44.31 feet; thence run South 48°23'22" West for a distance of 35.08 feet; thence run South 11°10'06" West for a distance of 174.79 feet; thence run South 04°12'55" West for a distance of 151.70 feet; thence run South 00°26'51" East for a distance of 131.06 feet; thence run South 07°57'23" East for a distance of 52.02 feet; thence run South 05°32'11" East for a distance of 73.70 feet; thence run South 39°42'25" West for a distance of 60.13 feet; thence run South 75°24'24" West for a distance of 513.63 feet; thence run North 71°25'16" West for a distance of 78.08 feet; thence run North 54°31'46" West for a distance of 292.73 feet; thence run North 36°53'16" West for a distance of 88.54 feet; thence run North 75°02'38" West for a distance of 101.42 feet; thence run North 58°07'21" West for a distance of 145.39 feet; thence run North 63°16'52" West for a distance of 100.54 feet; thence run North 70°16'01" West for a distance of 52.57 feet; thence run North 76°18'47" West for a distance of 139.12 feet; thence run North 88°18'46" West for a distance of 118.58 feet; thence run South 78°25'37" West for a distance of 120.58 feet; thence run South 70°42'34" West for a distance of 58.35 feet; thence run South 54°33'15" West for a distance of 236.73 feet; thence run South 01°33'17" West for a distance of 304.71 feet; thence run South 30°08'16" East for a distance of 194.40 feet; thence run South 01°31'06" West for a distance of 139.28 feet; thence run South 24°09'25" East for a distance of 317.35 feet; thence run South 07°39'57" East for a distance of 618.63 feet; thence run South 05°14'32" East for a distance of 48.49 feet; thence run South 86°37'33" East for a distance of 144.20 feet; thence run North 74°58'46" East for a distance of 84.50 feet; thence run North 89°49'58" East for a distance of 166.94 feet; thence run North 54°40'25" East for a distance of 155.08 feet; thence run South 87°04'16" East for a distance of 183.90 feet; thence run South

75°30'01" East for a distance of 292.56 feet; thence run South 74°07'29" East for a distance of 164.37 feet; thence run North 53°12'13" East for a distance of 77.41 feet; thence run North 71°22'37" East for a distance of 85.20 feet; thence run South 85°53'26" East for a distance of 92.10 feet; thence run South 83°23'30" East for a distance of 128.98 feet; thence run North 68°54'10" East for a distance of 100.70 feet; thence run North 55°32'22" East for a distance of 148.01 feet; thence run North 32°25'17" East for a distance of 235.05 feet; thence run North 33°14'22" East for a distance of 199.06 feet; thence run North 48°38'03" East for a distance of 111.62 feet; thence run North 40°09'31" East for a distance of 96.63 feet; thence run North 18°03'03" East for a distance of 285.56 feet; thence run North 58°55'34" East for a distance of 367.04 feet; thence run South 72°39'46" East for a distance of 90.19 feet; thence run South 68°05'01" East for a distance of 88.10 feet; thence run South 32°29'50" East for a distance of 134.26 feet; thence run North 58°20'15" East for a distance of 1006.12 feet; thence run North 08°49'07" East for a distance of 121.76 feet; thence run North 86°01'20" East for a distance of 76.03 feet; thence run South 81°56'11" East for a distance of 62.99 feet; thence run South 62°22'55" East for a distance of 61.06 feet; thence run South 28°55'42" East for a distance of 96.72 feet; thence run South 07°05'01" East for a distance of 98.49 feet; thence run South 20°24'01" West for a distance of 97.27 feet; thence run South 64°30'14" East for a distance of 119.77 feet; thence run North 42°57'49" East for a distance of 68.57 feet; thence run North 19°23'04" East for a distance of 158.14 feet; thence run North 75°28'14" East for a distance of 446.92 feet; thence run North 06°56'07" East for a distance of 178.75 feet; thence run North 66°12'10" West for a distance of 63.59 feet; thence run North 71°24'18" West for a distance of 123.29 feet; thence run North 50°53'00" West for a distance of 112.15 feet; thence run North 16°04'21" West for a distance of 86.40 feet; thence run North 28°52'24" East for a distance of 62.66 feet; thence run North 69°42'26" East for a distance of 91.21 feet; thence run North 88°57'04" East for a distance of 137.96 feet; thence run South 51°15'23" East for a distance of 66.98 feet; thence run South 57°59'46" East for a distance of 90.38 feet; thence run North 83°57'39" East for a distance of 185.60 feet; thence run South 69°53'36" East for a distance of 103.27 feet; thence run South 33°27'20" East for a distance of 47.82 feet; thence run South 01°07'11" East for a distance of 176.02 feet; thence run South 57°10'59" East for a distance of 90.42 feet; thence run South 59°52'00" East for a distance of 215.96 feet; thence run South 40°50'50" East for a distance of 100.90 feet; thence run South 01°41'10" West for a distance of 221.55 feet; thence run South 44°25'43" East for a distance of 177.22 feet; thence run South 57°17'08" East for a distance of 194.66 feet; thence run South 49°41'29" East for a distance of

234.47 feet; thence run South $51^{\circ}45'12''$ East for a distance of 285.65 feet; thence run South $46^{\circ}48'39''$ East for a distance of 77.27 feet; thence run South $55^{\circ}26'25''$ East for a distance of 87.85 feet; thence run North $83^{\circ}37'01''$ East for a distance of 54.43 feet; thence run North $59^{\circ}38'02''$ East for a distance of 133.38 feet; thence run North $86^{\circ}08'02''$ East for a distance of 77.48 feet; thence run South $67^{\circ}01'55''$ East for a distance of 118.58 feet; thence run South $45^{\circ}08'14''$ East for a distance of 2560.69 feet; thence run North $29^{\circ}52'54''$ East for a distance of 85.21 feet; thence run North $27^{\circ}30'00''$ East for a distance of 86.22 feet; thence run North $25^{\circ}35'58''$ East for a distance of 48.08 feet; thence run North $21^{\circ}40'44''$ East for a distance of 96.89 feet; thence run North $69^{\circ}44'52''$ West for a distance of 38.61 feet; thence run South $75^{\circ}26'58''$ West for a distance of 151.66 feet; thence run North $09^{\circ}04'17''$ West for a distance of 117.55 feet; thence run North $12^{\circ}06'14''$ East for a distance of 74.75 feet; thence run North $46^{\circ}03'43''$ East for a distance of 74.51 feet; thence run North $12^{\circ}46'58''$ West for a distance of 32.83 feet; thence run North $19^{\circ}55'33''$ West for a distance of 74.92 feet; thence run South $32^{\circ}11'57''$ West for a distance of 85.42 feet; thence run South $69^{\circ}25'44''$ West for a distance of 67.21 feet; thence run North $65^{\circ}02'17''$ West for a distance of 75.05 feet; thence run North $86^{\circ}16'33''$ West for a distance of 109.50 feet; thence run South $69^{\circ}48'24''$ West for a distance of 95.29 feet; thence run North $31^{\circ}09'56''$ West for a distance of 62.54 feet; thence run North $01^{\circ}12'06''$ West for a distance of 153.58 feet; thence run North $36^{\circ}23'56''$ East for a distance of 106.80 feet; thence run North $10^{\circ}55'24''$ West for a distance of 140.47 feet; thence run North $22^{\circ}37'48''$ East for a distance of 51.15 feet; thence run North $37^{\circ}19'10''$ East for a distance of 162.48 feet; thence run North $19^{\circ}33'02''$ East for a distance of 118.95 feet; thence run North $08^{\circ}08'12''$ East for a distance of 108.72 feet; thence run North $04^{\circ}59'51''$ West for a distance of 137.15 feet; thence run North $20^{\circ}30'53''$ East for a distance of 147.93 feet; thence run North $03^{\circ}46'25''$ East for a distance of 148.33 feet; thence run North $17^{\circ}32'07''$ West for a distance of 160.04 feet; thence run North $15^{\circ}13'39''$ West for a distance of 140.97 feet; thence run North $00^{\circ}05'49''$ West for a distance of 73.02 feet; thence run North $25^{\circ}39'35''$ East for a distance of 96.53 feet; thence run North $59^{\circ}22'21''$ East for a distance of 73.73 feet; thence run South $40^{\circ}21'48''$ East for a distance of 52.95 feet; thence run South $01^{\circ}53'33''$ West for a distance of 116.69 feet; thence run South $82^{\circ}33'24''$ East for a distance of 120.72 feet; thence run South $63^{\circ}38'53''$ East for a distance of 64.07 feet; thence run South $44^{\circ}52'32''$ East for a distance of 54.42 feet; thence run South $10^{\circ}29'59''$ East for a distance of 79.18 feet; thence run South $37^{\circ}18'09''$ West for a distance of 50.11 feet; thence run South $29^{\circ}46'39''$ West for a distance of 75.80 feet; thence run South $25^{\circ}22'43''$ West for a distance of 103.06 feet; thence run South

10°56'20" West for a distance of 105.37 feet; thence run South 10°07'11" East for a distance of 107.10 feet; thence run South 42°29'24" East for a distance of 116.91 feet; thence run South 08°16'17" West for a distance of 34.66 feet; thence run South 60°16'31" West for a distance of 106.48 feet; thence run South 23°42'39" West for a distance of 130.40 feet; thence run South 08°54'48" East for a distance of 85.19 feet; thence run South 20°38'43" East for a distance of 62.59 feet; thence run South 85°18'35" East for a distance of 164.23 feet; thence run South 88°28'10" East for a distance of 201.60 feet; to a point on the East line of Section 24, Township 51 South, Range 26 East, Collier County, Florida; thence run North 00°15'28" East, along the East line of said Section 24, for a distance of 4476.41 feet to the Northeast corner of said Section 24; thence run North 88°58'55" West, along the North line of the Northeast ¼ of said Section 24, for a distance of 2713.71 feet to the North ¼ corner of said Section 24; thence run North 88°59'02" West, along the North line of the Northwest ¼ of said Section 24, for a distance of 2713.25 feet to the Northwest corner of said Section 24; thence run North 00°25'53" West, along the East line of the Southeast ¼ of Section 14, Township 51 South, Range 26 East, for a distance of 2749.82 feet to the East ¼ Corner of said Section 14; thence continue North 00°25'53" West, along the East line of the Southeast ¼ of the Northeast ¼ of said Section 14, for a distance of 1374.91 feet to the Southeast corner of the Northeast ¼ of the Northeast ¼ of said Section 14; thence run North 88°20'09" West, along the South line of the East ½ of the Northeast ¼ of the Northeast ¼ of said Section 14, for a distance of 692.50 feet to the Southwest corner of the East ½ of the Northeast ¼ of the Northeast ¼ of said Section 14; thence run North 52°51'27" West for a distance of 173.20 feet; thence run South 37°08'33" West for a distance of 123.43 feet to a point on the South line of the North ¼ of said Section 14; thence run North 88°20'10" West, along the South line of the North ¼ of said Section 14, for a distance of 4634.68 feet to the Southwest corner of the Northwest ¼ of the Northwest ¼ of said Section 14; thence run North 89°13'52" West, along the North line of the South ½ of the Northeast ¼ of Section 15, Township 51 South, Range 26 East, for a distance of 2738.98 feet to the Northwest corner of the South ½ of the Northeast ¼ of said Section 15; thence run South 00°18'43" West, along the West line of the South ½ of the Northeast ¼ of said Section 15, for a distance of 1392.96 feet to the center of said Section 15; thence run South 89°06'35" East, along the South line of the Northeast ¼ of said Section 15, for a distance of 2739.04 feet to the East ¼ corner of said Section 15; thence run South 00°19'46" West, along the East line of the Southeast ¼ of said Section 15, for a distance of 2787.36 feet to the Southeast corner of said Section 15 and the POINT OF BEGINNING; containing **1550.1359** acres, more or less.

Parcel No. 7

That certain parcel of land, lying in Sections 24 and 25, Township 51 South, Range 26 East, Collier County, Florida, being more particularly described as follows: Commence at the Northeast boundary corner of said Section 24, thence along the East boundary of said Section 24 South $00^{\circ}15'28''$ West a distance of 4,476.41 feet to a point on said boundary; thence leaving said East boundary North $88^{\circ}28'10''$ West a distance of 201.60 feet; thence North $85^{\circ}18'35''$ West a distance of 164.23 feet; thence North $20^{\circ}38'43''$ West a distance of 62.59 feet; thence North $08^{\circ}54'48''$ West a distance of 85.19 feet; thence North $23^{\circ}42'39''$ East a distance of 130.40 feet; thence North $60^{\circ}16'31''$ East a distance of 106.48 feet; thence North $08^{\circ}16'17''$ East a distance of 34.66 feet; thence North $42^{\circ}29'24''$ West a distance of 116.91 feet; thence North $10^{\circ}07'11''$ West a distance of 107.10 feet; thence North $10^{\circ}56'20''$ East a distance of 105.37 feet, thence North $25^{\circ}22'43''$ East a distance of 103.06 feet; thence North $29^{\circ}46'39''$ East a distance of 75.80 feet; thence North $37^{\circ}18'09''$ East a distance of 50.11 feet; thence North $10^{\circ}29'59''$ West a distance of 79.18 feet; thence North $44^{\circ}52'32''$ West a distance of 54.42 feet; thence North $63^{\circ}38'53''$ West a distance of 64.07 feet; thence North $82^{\circ}33'24''$ West a distance of 120.72 feet; thence North $01^{\circ}53'33''$ East a distance of 116.69 feet; thence North $40^{\circ}21'48''$ West a distance of 52.95 feet to the POINT OF BEGINNING of the parcel of land hereinafter described; thence South $59^{\circ}22'21''$ West a distance of 73.73 feet; thence South $25^{\circ}39'35''$ West a distance of 95.53 feet (96.63 Calculated); thence South $00^{\circ}05'49''$ East a distance of 73.02 feet; thence South $15^{\circ}13'39''$ East a distance of 140.97 feet; thence South $17^{\circ}32'07''$ East a distance of 160.04 feet; thence South $03^{\circ}46'25''$ West a distance of 148.33 feet; thence South $20^{\circ}30'53''$ West a distance of 147.93 feet; thence South $04^{\circ}59'51''$ East a distance of 137.15 feet; thence South $08^{\circ}08'12''$ West a distance of 108.72 feet; thence South $19^{\circ}33'02''$ West a distance of 118.95 feet; thence South $37^{\circ}19'10''$ West a distance of 162.48 feet; thence South $22^{\circ}37'48''$ West a distance of 51.15 feet; thence South $10^{\circ}55'24''$ **East** a distance of 140.47 feet; thence South $36^{\circ}23'56''$ West a distance of 106.80 feet; thence South $01^{\circ}12'06''$ East a distance of 153.58 feet; thence South $31^{\circ}09'56''$ East a distance of 62.54 feet; thence North $69^{\circ}48'24''$ East a distance of 95.29 feet; thence South $86^{\circ}16'33''$ East a distance of 109.50 feet; thence South $65^{\circ}02'17''$ East a distance of 75.05 feet; thence North $69^{\circ}25'44''$ East a distance of 67.21 feet; thence North $32^{\circ}11'57''$ East a distance of 85.42 feet; thence South $19^{\circ}55'33''$ East a distance of 74.92 feet; thence South $12^{\circ}46'58''$ East a distance of 32.83 feet; thence South $46^{\circ}03'43''$ West a distance of 74.51 feet; thence South $12^{\circ}06'14''$ West a distance of 74.75 feet; thence South $09^{\circ}04'17''$ East a distance of 117.55 feet; thence North $75^{\circ}26'58''$ East a distance of 151.66 feet; thence South $69^{\circ}44'52''$ East

a distance of 38.61 feet; thence South 21°40'44" West a distance of 96.89 feet; thence South 25°35'58" West a distance of 48.08 feet; thence South 27°30'00" West a distance of 86.22 feet; thence South 29°52'54" West a distance of 85.21 feet; thence North 45°08'14" West a distance of 2,560.69 feet; thence North 00°15'28" East a distance of 265.00 feet; thence South 89°44'32" East a distance of 375.00 feet; thence North 84°04'19" East a distance of 149.18 feet; thence North 79°01'56" East a distance of 484.64 feet; thence North 61°23'47" East a distance of 447.94 feet; thence South 89°44'32" East a distance of 264.73 feet; thence South 00°15'28" West a distance of 141.70 feet to the POINT OF BEGINNING. Containing 43.00 acres, more or less. LESS AND EXCEPT THEREFROM PROPERTY CONVEYED TO THE SCHOOL BOARD OF COLLIER COUNTY, FLORIDA, AS RECORDED IN OFFICIAL RECORDS BOOK 1495, PAGES 384, 385 AND 387, AS MORE PARTICULARLY DESCRIBED AS FOLLOWS:

That certain parcel of land lying in and being a part of Sections 23 and 24, Township 51 South, Range 26 East, Collier County, Florida, being more particularly described as follows:

Commence at the Northeast corner of said Section 23; thence run North 88°58'53" West, **along the North line of said Section 23, a distance of 218.01 feet; thence leaving said Section line;** run South 39°46'43" West a distance of 711.68 feet; thence run South 50°13'17" East a distance of 1515.63 feet; thence run South 39°46'43" West a distance of 1,050.00 feet; thence run South 50°13'17" East a distance of 50.00 feet to the POINT OF BEGINNING of the parcel of land hereinafter described; thence continue South 50°13'17" East a distance of 739.75 feet; thence run North 39°46'43" East a distance of 706.62 feet; thence run North 50°13'17" West a distance of 739.75 feet; thence run South 39°46'43" West a distance of 706.62 feet to the POINT OF BEGINNING. Containing 12.00 acres, more or less.

LESS AND EXCEPT THEREFROM PROPERTY CONVEYED TO BOARD OF COUNTY COMMISSIONERS OF COLLIER COUNTY, FLORIDA, AS RECORDED IN OFFICIAL RECORDS BOOK 1755, PAGE 361, AS MORE PARTICULARLY DESCRIBED AS FOLLOWS:

All that part of the Northeast ¼ of Section 15, Township 51 South, Range 26 East, Collier County, Florida and being more particularly described as follows:

Commencing at the Southwesterly most corner of Championship Drive, Marco Shores Unit 30 Golf Course, Plat Book 17, pages 98 through 103, Collier County, Florida; thence along the Southerly line of said Championship Drive South 89°13'53" East 35.40 feet to the Point of Beginning of the parcel herein described; thence continue along said line South 89°13'52" East 109.79 feet; thence leaving said line South 00°18'43" West 153.94 feet; thence North 86°07'06"

West 110.00 feet; thence North 00°18'43" East 147.96 feet to the Point of Beginning. Containing 0.38 acres, more or less.

LESS AND EXCEPT

ALL THAT PORTION OF GOLF COURSE PARCELS 1, 2, 3 AND 4 "MARCO SHORES UNIT 30 GOLF COURSE", AS SHOWN ON THE PLAT THEREOF, RECORDED IN PLAT BOOK 17, AT PAGES 98 THROUGH 103 OF THE PUBLIC RECORDS OF COLLIER COUNTY, FLORIDA. CONTAINING 243.96 ACRES, MORE OR LESS.

Subject to easements, reservations or restrictions of record.

Net Property Acreage = 1389.7739 Acres, More or Less.

Bearings shown hereon refer to the North line of the Northeast ¼ of Section 22, Township 51 South, Range 26 East, Collier County, Florida, as being North 88°58'51" West.

Property Description for Parcel 1 is composed entirely from that certain map titled MARCO SHORES UNIT 30 BOUNDARY MAP created by the Deltona Corporation -- Dept. of Real Estate Services in July 1989 and revised November 20, 1989 and again September 24, 1991 as provided by Gulf Bay Development Inc. and has been prepared without benefit of survey.

Property Descriptions for Parcels 2 and 3 are based on Exhibit "A" of the SPECIAL WARRANTY DEED as recorded in Official Record Book 1911 Page 144 Et. Seq. of the Public Records of Collier County, Florida and has been prepared without benefit of survey.

These descriptions of all Parcels shown hereon are intended only as representations of specific data in the above referenced documents and not intended as certification of actual field locations.

EXHIBIT 4

Statement of Estimated Regulatory Costs

Statement of Estimated Regulatory Costs under Section 120.541, Florida Statutes

(2) A statement of estimated regulatory costs shall include:

(a) An economic analysis showing whether the rule directly or indirectly:

1. Is likely to have an adverse impact on economic growth, private sector job creation or employment, or private sector investment in excess of \$1 million in the aggregate within 5 years after the implementation of the rule;

Because the amendment to the legal description solely involves changes to correct scrivener's errors in the current legal description, the amendment will not and cannot change the boundaries or the acreage within the boundaries of the District. Therefore, the amended rule will have no direct or indirect impact on these areas.

2. Is likely to have an adverse impact on business competitiveness, including the ability of persons doing business in the state to compete with persons doing business in other states or domestic markets, productivity, or innovation in excess of \$1 million in the aggregate within 5 years after the implementation of the rule; or

Because the amendment to the legal description solely involves changes to correct scrivener's errors in the current legal description, the amendment will not and cannot change the boundaries or the acreage within the boundaries of the District. Therefore, the amended rule will have no direct or indirect impact on these areas.

3. Is likely to increase regulatory costs, including any transactional costs, in excess of \$1 million in the aggregate within 5 years after the implementation of the rule.

Because the amendment to the legal description solely involves changes to correct scrivener's errors in the current legal description, the amendment will not and cannot change the boundaries or the acreage within the boundaries of the District. Therefore, the amended rule will not directly or indirectly result in increased costs of any nature.

(b) A good faith estimate of the number of individuals and entities likely to be required to comply with the rule, together with a general description of the types of individuals likely to be affected by the rule.

Because the amendment to the legal description solely involves changes to correct scrivener's errors in the current legal description, the amendment will not and cannot change the boundaries or the acreage within the boundaries of the District. Therefore, the amended rule will not directly or indirectly affect any individuals.

(c) A good faith estimate of the cost to the agency, and to any other state and local government entities, of implementing and enforcing the proposed rule, and any anticipated effect on state or local revenues.

Because the amendment to the legal description solely involves changes to correct scrivener's errors in the current legal description, the amendment will not and cannot change the boundaries or the acreage within the boundaries of the District. Therefore, the amended rule will not directly or indirectly result in any additional costs to the agency or any other state and local government entities and will have no anticipated effect on state or local revenues.

(d) A good faith estimate of the transactional costs likely to be incurred by individuals and entities, including local government entities, required to comply with the requirements of the rule. As used in this section, "transactional costs" are direct costs that are readily ascertainable based upon standard business practices, and include filing fees, the cost of obtaining a license, the cost of equipment required to be installed or used or procedures required to be employed in complying with the rule, additional operating costs incurred, the cost of monitoring and reporting, and any other costs necessary to comply with the rule.

Because the amendment to the legal description solely involves changes to correct scrivener's errors in the current legal description, the amendment will not and cannot change the boundaries or the acreage within the boundaries of the District. Therefore, the amended rule will not directly or indirectly result in increased transactional costs to any individual or entity.

(e) An analysis of the impact on small businesses as defined by s. 288.703, and an analysis of the impact on small counties and small cities as defined in s. 120.52. The impact analysis for small businesses must include the basis for the agency's decision not to implement alternatives that would reduce adverse impacts on small businesses.

Because the amendment to the legal description solely involves changes to correct scrivener's errors in the current legal description, the amendment will not and cannot change the boundaries or the acreage within the boundaries of the District. Therefore, the amended rule will have no adverse impact on small businesses, counties or cities and so no alternatives are necessary.

(f) Any additional information that the agency determines may be useful.

No additional information is necessary.

(g) In the statement or revised statement, whichever applies, a description of any regulatory alternatives submitted under paragraph (1)(a) and a statement adopting the alternative or a statement of the reasons for rejecting the alternative in favor of the proposed rule.

N/A.

COLLIER COUNTY
Growth Management Department
Zoning Division
Comprehensive Planning Section

July 7, 2015

Mr. Anthony Pires, Jr.
Woodward, Pires & Lombardo, P.A.
3200 North Tamiami Trail
Suite 200
Naples, FL 34103

Re: Fiddler's Creek Community Development District 1
PL20150001206 Scrivener's Error
July 07, 2015 BCC Meeting – Agenda Item 16A20

Dear Mr. Pires,

This is to inform you that the Collier County Board of County Commissioners (BCC) have approved/waived an optional local public hearing on the petition to correct the legal description of the Fiddler's Creek Community Development District 1 filed with the Florida Land and Water Adjudicatory Commission, since the CDD is over 1,000 acres.

Cordially,

Marcia R. Kendall

Marcia R. Kendall, Senior Planner
Growth Management Department
Zoning Division
Comprehensive Planning Section

Cc: Michael Bosi, AICP, Zoning Division Director

COLLIER COUNTY
Growth Management Department
Zoning Division
Comprehensive Planning Section

Wednesday, May 27, 2015

FIDDLER'S CREEK COMMUNITY DEVELOPMENT DISTRICT 1
% ANTHONY P PIRES JR
WOODWARD PIRES & LOMBARDO PA
3200 TAMiami TRL N STE 200
NAPLES, FL 34103

RE: Project #PL20150001206 - Community Development District (CDDA) Scrivener's Error
Amendment Petition Fiddler's Creek District 1

Dear Applicant:

Please be advised staff has received the above referenced Application and Fee on May 26, 2015, and assigned it Project #PL20150001206. This petition number will be included on all future correspondence.

Your copy of the application fee receipt #2015247440/Transaction #2015-027908 for the amount of **\$1,500.00** is enclosed.

Should your application amendment be required to hold a BCC meeting, you will be notified accordingly.

Should you have any questions, please contact me at 239-252-2387 or email marciakendall@colliergov.net.

Cordially,

Marcia R. Kendall

Marcia Kendall, Senior Planner
Zoning Division\Comprehensive Planning Section

Cc: Michael Bosi, AICP, Zoning Division Director
Project #PL20150001206 - Fiddler's Creek District 1 CDD Amendment Processing File

**Collier County
Growth Management Division**

2800 Horseshoe Drive N.
Naples, FL 34104
239-252-2400

RECEIPT OF PAYMENT

Receipt Number: 2015247440
Transaction Number: 2015-027908
Date Paid: 05/26/2015
Amount Due: \$1,500.00

Payment Details:	<u>Payment Method</u>	<u>Amount Paid</u>	<u>Check Number</u>
	Check	\$1,500.00	2623

Amount Paid: \$1,500.00
Change / Overage: \$0.00
Contact: YOUNG, VAN ASSENDERP PA
ATTORNEYS AT LAW
TALLAHASSEE, FL 32302

FEE DETAILS:

<u>Fee Description</u>	<u>Reference Number</u>	<u>Original Fee</u>	<u>Amount Paid</u>	<u>GL Account</u>
Application Fee (CDDA)	PL20150001206	\$1,500.00	\$1,500.00	131-138909-341265

Cashier Name: AlinaHarris
Batch Number: 4485
Entered By: kendall_m