



FLORIDA STATEWIDE REGIONAL EVACUATION STUDY PROGRAM



STORM TIDE ATLAS

COLLIER COUNTY



VOLUME 7-9 BOOK 2 OF 6

FLORIDA DIVISION OF
EMERGENCY MANAGEMENT

SOUTHWEST FLORIDA
REGIONAL PLANNING COUNCIL

SOUTHWEST FLORIDA REGION



INCLUDES HURRICANE EVACUATION STUDY



STATEWIDE
REGIONAL
EVACUATION
STUDY PROGRAM



Southwest Florida STORM TIDE ATLAS

Volume VII-9 Book 2 Collier County

This Book is part of Volume VII of the *Statewide Regional Evacuation Study* (SRES) Program and one of six county books in the Southwest Florida Storm Tide Atlas Series. Book 1 covers Charlotte County; Book 2 covers Collier County; Book 3 covers Glades County; Book 4 covers Hendry County; Book 5 covers Lee County and Book 6 covers Sarasota County. The Atlas maps identify those areas subject to potential storm tide flooding from the five categories of hurricane on the Saffir Simpson Hurricane Wind Scale as determined by NOAA's numerical storm surge model, SLOSH (updated 2009).

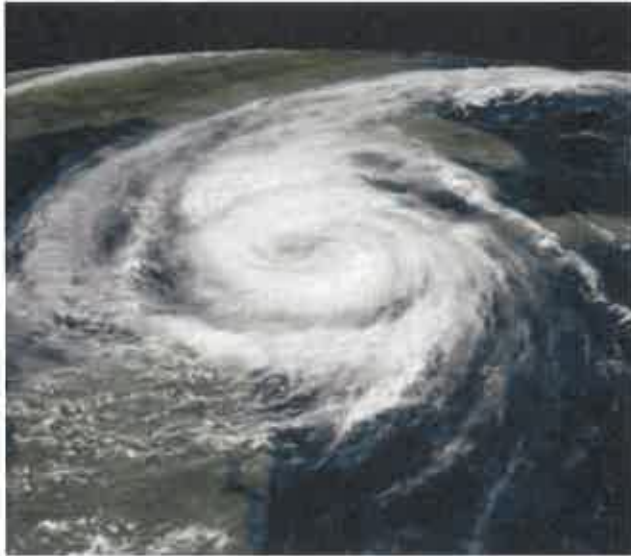
The Storm Tide Atlas, published in 2010, is the foundation of the hazards analysis for storm tide and a key component of the SRES. The Technical Data Report (Volume I) builds upon this analysis and includes the revised evacuation zones and population estimates, results of the evacuation behavioral data, shelter analysis and evacuation transportation analyses. The Study, which provides vital information to state and local emergency management, forms the basis for county evacuation plans. The final documents with summary information will be published and made available on the Internet (www.swfrpc.org) in June 2010.

The Atlas was produced by the Southwest Florida Regional Planning Council with funding by the Florida Legislature and the Federal Emergency Management Agency through the Florida Division of Emergency Management.



This Atlas was prepared and published by the Southwest Florida Regional Planning Council, 1926 Victoria Ave. Fort Myers, FL 33901 (239) 338-2550

Fax: (239) 338-2560: Email: dtrescott@swfrpc.org or dcobb@swfrpc.org or
kheatherington@swfrpc.org
Web site: www.swfrpc.org



VOLUME VII-9 Southwest Florida STORM TIDE ATLAS

TABLE OF CONTENTS

Book 2 Collier County

INTRODUCTION	11
THE SLOSH MODEL.....	11
Hypothetical Storm Simulations	12
The Grid for the Southwest Florida SLOSH Model.....	15
Storm Scenario Determinations.....	15
CREATION OF THE STORM TIDE ZONES	17
Determining Storm Tide Height and Flooding Depth.....	17
Storm Tide Post-Processing	18
VARIATIONS TO CONSIDER	20
Storm tide & Wave Height.....	20
Forward Speed	20
Radius of Maximum Winds	20
Astronomical Tides	20
Accuracy	21
POINTS OF REFERENCE	21
STORM TIDE ATLAS.....	24

LIST OF TABLES

Table 1	Saffir-Simpson Hurricane Wind Scale	13
Table 2	Southwest Florida Basin Hypothetical Storm Parameters	14
Table 3	Potential Storm Tide Height (s) by County	16
Table 4	Selected Points of Reference	22

LIST OF FIGURES

Figure 1 The Southwest Florida Region	11
Figure 2 Southwest Basin Grid	15
Figure 3 SLOSH Grid with Surge Values	15
Figure 4 Digital Elevation from LIDAR.....	17
Figure 5 SLOSH Display	18
Figure 6 SLOSH Display Post-Processing	18
Figure 7 Storm Surge for the Southwest Region	19
Figure 8 Collier County Atlas Map Index.....	26

LIST OF MAPS

Map 1	27
Map 2	28
Map 3	29
Map 4	30
Map 5	31
Map 6	32
Map 7	33
Map 8	34
Map 9	35
Map 10.....	36
Map 11.....	37
Map 12.....	38
Map 13.....	39
Map 14.....	40
Map 15.....	41
Map 16.....	42
Map 17.....	43
Map 18.....	44
Map 19.....	45
Map 20.....	46
Map 21.....	47
Map 22.....	48
Map 23.....	49
Map 24.....	50
Map 25.....	51
Map 26.....	52
Map 27.....	53
Map 28.....	54
Map 29.....	55
Map 30.....	56
Map 31.....	57

Map 32.....	58
Map 33.....	59
Map 34.....	60
Map 35.....	61
Map 36.....	62
Map 37.....	63
Map 38.....	64
Map 39.....	65
Map 40.....	66
Map 41.....	67
Map 42.....	68
Map 43.....	69
Map 44.....	70
Map 45.....	71
Map 46.....	72
Map 47.....	73
Map 48.....	74
Map 49.....	75
Map 50.....	76
Map 51.....	77
Map 52.....	78
Map 53.....	79
Map 54.....	80
Map 55.....	81
Map 56.....	82
Map 57.....	83
Map 58.....	84
Map 59.....	85
Map 60.....	86
Map 61.....	87
Map 62.....	88
Map 63.....	89
Map 64.....	90
Map 65.....	91
Map 66.....	92
Map 67.....	93
Map 68.....	94
Map 69.....	95
Map 70.....	96
Map 71.....	97
Map 72.....	98
Map 73.....	99
Map 74.....	100
Map 75.....	101
Map 76.....	102

Map 77.....103
 Map 78.....104
 Map 79.....105
 Map 80.....106
 Map 81.....107
 Map 82.....108
 Map 83.....109
 Map 84.....110
 Map 85.....111
 Map 86.....112
 Map 87.....113
 Map 88.....114
 Map 89.....115
 Map 90.....116
 Map 91.....117
 Map 92.....118
 Map 93.....119
 Map 94.....120
 Map 95.....121
 Map 96.....122
 Map 97.....123
 Map 98.....124
 Map 99.....125
 Map 100.....126
 Map 101.....127
 Map 102.....128
 Map 103.....129
 Map 104.....130
 Map 105.....131
 Map 106.....132
 Map 107.....133
 Map 108.....134
 Map 109.....135
 Map 110.....136
 Map 111.....137
 Map 112.....138
 Map 113.....139
 Map 114.....140
 Map 115.....141
 Map 116.....142
 Map 117.....143
 Map 118.....144
 Map 119.....145
 Map 120.....146
 Map 121.....147
 Map 122.....148

Map 123.....	149
Map 124.....	150
Map 125.....	151
Map 126.....	152
Map 127.....	153
Map 128.....	154
Map 129.....	155
Map 130.....	156
Map 131.....	157
Map 132.....	158
Map 133.....	159
Map 134.....	160
Map 135.....	161
Map 136.....	162
Map 137.....	163
Map 138.....	164
Map 139.....	165
Map 140.....	166
Map 141.....	167
Map 142.....	168
Map 143.....	169
Map 144.....	170
Map 145.....	171
Map 146.....	172
Map 147.....	173
Map 148.....	174
Map 149.....	175
Map 150.....	176
Map 151.....	177
Map 152.....	178
Map 153.....	179
Map 154.....	180
Map 155.....	181
Map 156.....	182
Map 157.....	183
Map 158.....	184
Map 159.....	185
Map 160.....	186
Map 161.....	187
Map 162.....	188
Map 163.....	189
Map 164.....	190
Map 165.....	191
Map 166.....	192
Map 167.....	193
Map 168.....	194

Map 169.....195
 Map 170.....196
 Map 171.....197
 Map 172.....198
 Map 173.....199
 Map 174.....200
 Map 175.....201
 Map 176.....202
 Map 177.....203
 Map 178.....204
 Map 179.....205
 Map 180.....206
 Map 181.....207
 Map 182.....208
 Map 183.....209
 Map 184.....210
 Map 185.....211
 Map 186.....212
 Map 187.....213
 Map 188.....214
 Map 189.....215
 Map 190.....216
 Map 191.....217
 Map 192.....218
 Map 193.....219
 Map 194.....220
 Map 195.....221
 Map 196.....222
 Map 197.....223
 Map 198.....224
 Map 199.....225
 Map 200.....226
 Map 201.....227
 Map 202.....228
 Map 203.....229
 Map 204.....230
 Map 205.....231
 Map 206.....232
 Map 207.....233
 Map 208.....234
 Map 209.....235
 Map 210.....236
 Map 211.....237
 Map 212.....238
 Map 213.....239
 Map 214.....240

Map 215.....	241
Map 216.....	242
Map 217.....	243
Map 218.....	244
Map 219.....	245
Map 220.....	246
Map 221.....	247
Map 222.....	248
Map 223.....	249
Map 224.....	250
Map 225.....	251
Map 226.....	252
Map 227.....	253
Map 228.....	254
Map 229.....	255
Map 230.....	256
Map 231.....	257
Map 232.....	258
Map 233.....	259
Map 234.....	260
Map 235.....	261
Map 236.....	262
Map 237.....	263
Map 238.....	264
Map 239.....	265
Map 240.....	266
Map 241.....	267
Map 242.....	268
Map 243.....	269
Map 244.....	270
Map 245.....	271
Map 246.....	272
Map 247.....	273
Map 248.....	274
Map 249.....	275
Map 250.....	276
Map 251.....	277
Map 252.....	278
Map 253.....	279
Map 254.....	280
Map 255.....	281
Map 256.....	282
Map 257.....	283
Map 258.....	284
Map 259.....	285
Map 260.....	286

Map 261.....287
 Map 262.....288
 Map 263.....289
 Map 264.....290
 Map 265.....291
 Map 266.....292
 Map 267.....293
 Map 268.....294
 Map 269.....295
 Map 270.....296
 Map 271.....297
 Map 272.....298
 Map 273.....299
 Map 274.....300
 Map 275.....301
 Map 276.....302
 Map 277.....303
 Map 278.....304
 Map 279.....305
 Map 280.....306
 Map 281.....307
 Map 282.....308
 Map 283.....309
 Map 284.....310
 Map 285.....311
 Map 286.....312
 Map 287.....313
 Map 288.....314
 Map 289.....315



CREDITS & ACKNOWLEDGEMENTS

Funding was authorized by the Florida Legislature through House Bill 7121, as a result of the 2004 and 2005 hurricane seasons. Provisions of this bill require the Division of Emergency Management to update all Regional Evacuation Studies in the State and inexorably tied the Evacuation Studies and Growth Management. As a result, this study addresses both Emergency Management and Growth Management data needs. Funds were also provided by the Federal Emergency Management Agency (FEMA) with all money administered through the Florida Division of Emergency Management (FDEM), 2555 Shumard Oak Blvd., Tallahassee, 32399. Web site: www.floridadisaster.org.

Local match was provided by the counties of Charlotte, Collier, Glades, Hendry, Lee and Sarasota.

The Council acknowledges and extends its appreciation to the following agencies and people for their cooperation and assistance in the development of this document:

National Oceanic and Atmospheric Administration (NOAA/TPC-NHC) for the SLOSH numerical storm surge model developed by the late Chester L. Jelesnianski, the development of the 2009 Ft Myers Basin under the management of Jamie Rhome, and for the storm tide computation and Interpretation provided by the NOAA Storm Surge Modeling team. The National Weather Service, Tampa office for their coordination and support.

Florida Division of Emergency Management

David Halstead, Director
Sandy Meyer, Hurricane Program Manager
Richard Butgereit, GIS Manager



Northeast Florida Regional Council

Jeffrey Alexander, Project Manager

Southwest Florida Regional Planning Council

Ken Heatherington Executive Director
Daniel L. Trescott, Study Manager
Daniel Cobb, GIS Analyst



Florida Emergency Preparedness Association

For their support in this statewide effort

County Emergency Management Agencies

Wayne P. Sallade, Director of Charlotte County Emergency Management
Dan Summers, Director of Collier County Emergency Management
Angle Snow, Director of Glades County Emergency Management
Lupe Taylor, Director of Hendry County Emergency Management
John Wilson, Director of Lee County Emergency Management
Edward McCrane, Director of Sarasota County Emergency Management



INTRODUCTION

A comprehensive emergency management program requires attention to four (4) key inter-related components: preparedness, response, recovery and mitigation. Preparing and avoiding or reducing potential loss of life and property damage - **preparedness and mitigation** - requires accurate and precise hazard and vulnerability analyses. These analyses are the foundation for evacuation and disaster response planning, as well as the development of local mitigation strategies designed to reduce the community's overall risk to disasters. This Atlas series provides information to state, county and local emergency management officials and planners for use in hurricane preparedness and coastal management in the Southwest Florida Region including Charlotte, Collier, Glades, Hendry, Lee, and Sarasota counties (Figure 1). It was part of a statewide effort to enhance our ability to respond to a hurricane threat, facilitate the evacuation of vulnerable residents to a point of relative safety and mitigate our vulnerability in the future. The ***Statewide Regional Evacuation Study Program*** provides a consistent, coordinated and improved approach to addressing the state and regional vulnerability to the hurricane threat.

The specific purpose of this Atlas is to provide maps which depict storm tide heights and the extent of stillwater, storm surge coastal flooding inundation from hurricanes of five different intensities in the Southwest Florida area. The Atlas was prepared by the Southwest Florida Regional Planning Council as part of the ***Statewide Regional Evacuation Study Program***. The Study is a cooperative effort of the Florida Department of Community Affairs, Division of Emergency Management, the Florida Regional Planning Councils and the county emergency management agencies.



Figure 1 The Southwest Florida Region



THE SLOSH MODEL

The principal tool utilized in this study for analyzing the expected hazards from potential hurricanes affecting the study area is the Sea, Lake and Overland Surges from Hurricane (**SLOSH**) numerical storm surge prediction model. The SLOSH computerized model predicts the storm tide heights that result from hypothetical hurricanes with selected various combinations of pressure, size, forward speed, track and winds. Originally developed for use by the National Hurricane Center (NHC) as a tool to give geographically specific warnings of expected surge heights during the approach of hurricanes, the SLOSH model is utilized in regional studies for several key hazard and vulnerability analyses.

The SLOSH modeling system consists of the model source code and the model basin or grid. SLOSH model grids must be developed for each specific geographic coastal area individually incorporating the unique local bay and river configuration, water depths, bridges, roads and other physical features. In addition to open coastline heights, one of the most valuable outputs of the SLOSH model for evacuation planning is its predictions of surge heights over land into inland areas.

The first Southwest Florida SLOSH model basin was completed in 1979 and represented the first application of SLOSH storm surge dynamics to a major coastal area of the United States. The model was developed by the Techniques Development Lab of the National Oceanic and Atmospheric Administration (NOAA) under the direction of the late Dr. Chester P. Jelesnianski. In December 1990 the National Hurricane Center updated the SLOSH model for the Southwest basin. A major improvement to the model was the incorporation of wind speed degradation overland as the simulated storms moved inland. This duplicated the pressure "filling" and increases in the radius of maximum winds (RMW) as the hurricanes weaken after making landfall.

The newest generation of the SLOSH model basin incorporated in the 2010 Statewide Regional Evacuation Study reflects major improvements, including higher resolution basin data and grid configurations. Faster computer speeds allowed additional hypothetical storms to be run for creation of the MOMs¹ or the maximum potential storm tide values for each category of storm.

Hypothetical Storm Simulations

Surge height depends strongly on the specifics of a given storm including, forward speed, angle of approach, intensity or maximum wind speed, storm size, storm shape, and landfall location. The SLOSH model was used to develop data for various combinations of hurricane strength, wind speed, and direction of movement. Storm strength was modeled using the central pressure (defined as the difference between the ambient sea level pressure and the minimum value in the storm's center), the storm eye size and the radius of maximum winds using the five categories of hurricane intensity as depicted in the Saffir-Simpson Hurricane Wind Scale (see Table 1).

¹ Maximum of MEOWs

Table 1 Saffir-Simpson Hurricane Wind Scale

Category	Wind Speeds	Potential Damage
Category 1	(Sustained winds 74-95 mph)	<i>Very dangerous winds will produce some damage</i>
Category 2	(Sustained winds 96-110 mph)	<i>Extremely dangerous winds will cause extensive damage</i>
Category 3	(Sustained winds 111-130 mph)	<i>Devastating damage will occur</i>
Category 4	(Sustained winds 131-155 mph)	<i>Catastrophic damage will occur</i>
Category 5	(Sustained winds of 156 mph and above)	<i>Catastrophic damage will occur</i>

The modeling for each tropical storm/hurricane category was conducted using the mid-range pressure difference (Δp , millibars) for that category. The model also simulates the storm filling (weakening upon landfall) and radius of maximum winds (RMW) increase.

Ten storm track headings (WSW, W, WNW, NW, NNW, N, NNE, NE, E, ENE) were selected as being representative of storm behavior in the West Central Florida regions, based on observations by forecasters at the National Hurricane Center. And for each set of tracks in a specific direction storms were run at forward speeds of 5, 10, 15 and 25 mph. And, for each direction, at each speed, storms were run at two different sizes (20 statute mile radius of maximum winds and 35 statute miles radius of maximum winds.) Finally, each scenario was run at both mean tide and high tide. Both tide levels are now referenced to North American Vertical Datum of 1988 (NAVD88) as opposed to the National Geodetic Vertical Datum of 1929 (NGVD29) used in the previous study.

A total of 12,000 runs were made consisting of the different parameters shown in Table 2.

Table 2 Southwest Florida Basin Hypothetical Storm Parameters

Directions, speeds, (Saffir/Simpson) intensities, number of tracks and the number of runs.

Direction	Speeds (mph)	Size (Radius of Maximum winds)	Intensity	Tides	Tracks	Runs
WSW	5,10,15, 25 mph	20 statute miles; 35 statute miles	1 through 5	Mean/High	18	1440
W	5,10,15, 25 mph	20 statute miles; 35 statute miles	1 through 5	Mean/High	14	1120
WNW	5,10,15, 25 mph	20 statute miles; 35 statute miles	1 through 5	Mean/High	16	1280
NW	5,10,15, 25 mph	20 statute miles; 35 statute miles	1 through 5	Mean/High	14	1120
NNW	5,10,15, 25 mph	20 statute miles; 35 statute miles	1 through 5	Mean/High	14	1120
N	5,10,15, 25 mph	20 statute miles; 35 statute miles	1 through 5	Mean/High	10	800
NNE	5,10,15, 25 mph	20 statute miles; 35 statute miles	1 through 5	Mean/High	13	1040
NE	5,10,15, 25 mph	20 statute miles; 35 statute miles	1 through 5	Mean/High	17	1360
ENE	5,10,15, 25 mph	20 statute miles; 35 statute miles	1 through 5	Mean/High	17	1360
E	5,10,15, 25 mph	20 statute miles; 35 statute miles	1 through 5	Mean/High	17	1360
TOTAL						12,000

The Grid for the Southwest SLOSH Model

Figure 2 illustrates the area covered by the grid for the Southwest SLOSH Model. To determine the surge values the SLOSH model uses a bipolar elliptical grid as its unit of analysis with 105 arc lengths ($1 < I < 105$) and 99 radials ($1 < J < 99$). Use of the grid configuration allows for individual calculations per grid square which is beneficial in two ways: (1) provides increased resolution of the storm surge at the coastline and inside the harbors, bays and rivers, while decreasing the resolution in the deep water where detail is not as important; and (2) allows economy in computation.

The grid size for the Southwest model varies from approximately 0.001 square miles or 1.08 acres closest to the pole ($I = 1$) to the grids on the outer edges (Gulf of Mexico) where each grid is approximately 15.5 square miles.



Figure 2 Southwest Basin Grid

Storm Scenario Determinations

As indicated, the SLOSH model is the basis for the "hazard analysis" portion of coastal hurricane evacuation plans. Thousands of hypothetical hurricanes are simulated with various Saffir-Simpson Wind categories, forward speeds, landfall directions, and landfall locations. An envelope of



Figure 3 SLOSH Grid with Surge Values

high water containing the maximum value a grid cell attains is generated at the end of each model run. These envelopes are combined by the NHC into various composites which depict the possible flooding. One useful composite is the MEOW (Maximum Envelope of Water) which incorporates all the envelopes for a particular category, speed, and landfall direction. Once surge heights have been determined for the appropriate grids, the maximum surge heights are plotted by storm track and tropical storm/hurricane category. These plots of maximum surge heights for a given storm category and track are referred to as Maximum Envelopes of Water (MEOWs). The MEOWs or Reference Hurricanes can be used in evacuation decision making when and if sufficient forecast information is available to project storm track or type of storm (different landfalling, paralleling, or exiting storms).

The MEOWs provide information to the emergency managers in evacuation decision making. However, in order to determine a scenario which may confront the county in a hurricane threat 24-48 hours before a storm is expected, a further compositing of the MEOWs into Maximums of the Maximums (MOMs) is usually required.

The MOM (Maximum of the MEOWs) combines all the MEOWs of a particular category. The MOMs represent the maximum surge expected to occur at any given location, regardless of the specific storm track/direction of the hurricane. The only variable is the Intensity of the hurricane represented by category strength (Category 1-5).

The MOM surge heights, which were furnished by the National Hurricane Center, have 2 values, mean tide and high tide. Mean tide has 0' tide correction. High tide has a 1' tide correction added to it. The Storm Tide limits include the adjustment for mean high tide. All elevations are now referenced to the NAVD88 datum.

These surge heights were provided within the SLOSH grid system as illustrated on Figure 2. The range of maximum surge heights (low to high) for each scenario is provided for each category of storm (MOM) on Table 3. **It should be noted again that these surge heights represent the maximum surge height recorded in the county from the storm tide analysis including inland and back bay areas where the surge can be magnified dependent upon storm parameters.**

Table 3 Potential Storm Tide Height (s) by County

(In Feet above NAVD88)

*Storm Strength	Charlotte	Collier	Lee	Sarasota	Lake O 16ft	Lake O 20ft
TS	Up to 5.2	Up to 5.8	Up to 6.1	Up to 5.6	NA	NA
1	Up to 7	Up to 8.2	Up to 8.7	Up to 6.9	Up to 21.1	Up to 25
2	Up to 17	Up to 14.1	Up to 15.5	Up to 15.4	Up to 26.6	Up to 30.6
3	Up to 26	Up to 19.5	Up to 23	Up to 26	Up to 33.2	Up to 35.5
4	Up to 32.3	Up to 24.5	Up to 27.6	Up to 33.2	Up to 36.4	Up to 37.2
5	Up to 37.7	Up to 41.9	Up to 41.7	Up to 35.4	Up to 38.9	Up to 40

**Based on the category of storm on the Saffir-Simpson Hurricane Wind Scale*

*** Surge heights represent the maximum values from SLOSH MOMs*

CREATION OF THE STORM TIDE ZONES

The maps in this atlas depict SLOSH-modeled heights of storm tide and extent of flood inundation for hurricanes of five different intensities. As indicated above, the storm tide was modeled using the Maximum of Maximums (MOMs) representing the potential flooding from the five categories of storm intensity of the Saffir/Simpson Hurricane Wind Scale.

Determining Storm tide Height and Flooding Depth

SLOSH and SLOSH-related products reference storm tide heights relative to the model vertical datum, NAVD88. In order to determine the inundation depth of surge flooding at a particular location the ground elevation (relative to NAVD88) at that location must be subtracted from the potential surge height.²

Surge elevation, or water height, is the output of the SLOSH model. At each SLOSH grid point, the maximum surge height is computed at that point.

Within the SLOSH model an average elevation is assumed within each grid square. Height of water above terrain was not calculated using the SLOSH average grid elevation because terrain height may vary significantly within a SLOSH grid square. For example, the altitude of a 1-mile grid square may be assigned a value of 1.8 meters (6 feet), but this value represents an average of land heights that may include values



Figure 4 Digital Elevation from LIDAR

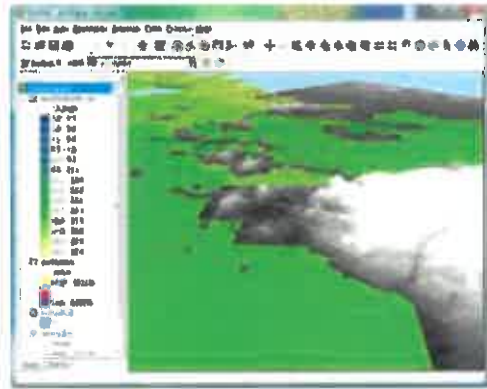
ranging from 0.9 to 2.7 meters (3 to 9 feet). In this case, a surge value of 2.5 meters (8 feet) in this square would imply a 0.7 meters (2 feet) average depth of water over the grid's terrain. However, in reality within the grid area portion of the grid would be "dry" and other parts could experience as much as 1.5 meters (5 feet) of inundation. Therefore, in order to determine the storm tide limits, the depth of surge flooding above terrain at a specific site in the grid square is the result of subtracting the terrain height determined by remote sensing from the model-generated storm tide height in that grid square.³

² It is important to note that one must use a consistent vertical datum when post-processing SLOSH storm surge values

³ Note: This represents the regional post-processing procedure. When users view SLOSH output within the SLOSH Display Program, the system uses average grid cell height when subtracting land.

Storm Tide Post-Processing

The Atlas was created using a Toolset wrapped into ESRI's ArcGIS mapping application, ArcMap. The surge tool was developed for the Statewide Regional Evacuation Study Program by the Tampa Bay Regional Planning Council, who had used a similar tool for the previous Evacuation Study Update (2006). This tool enabled all regions within the state of Florida to process the SLOSH and elevation data with a consistent methodology.



The tool basically performs the operation of translating the lower resolution SLOSH grid data into a smooth surface resembling actual storm tide and terrain; processing it with the high resolution elevation data derived from LIDAR. The image on the left represents how the data would look as it appears directly from SLOSH Model output.

Processing all the data in the raster realm, the tool is able to digest large amounts of data and output detailed representations of surge inundation.

Figure 5 SLOSH Display

The program first interpolates the SLOSH height values for each category into a raster surface using spline interpolation. This type of interpolation is best for smooth surfaces, such as water and slow changing terrain. The result is a raster surface representing the surge height for a category that can be processed against the raster Digital Elevation Model from the LIDAR. The "dry" values (represented as 99.9 in the SLOSH Model) are replaced by an average of the inundated grids surrounding current processed grid. An algorithm performs this action utilizing the range of values in the current category of storm being processed.

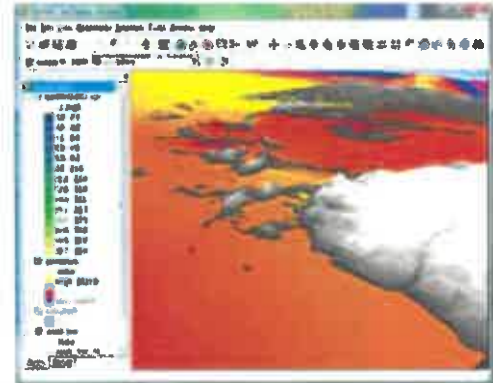
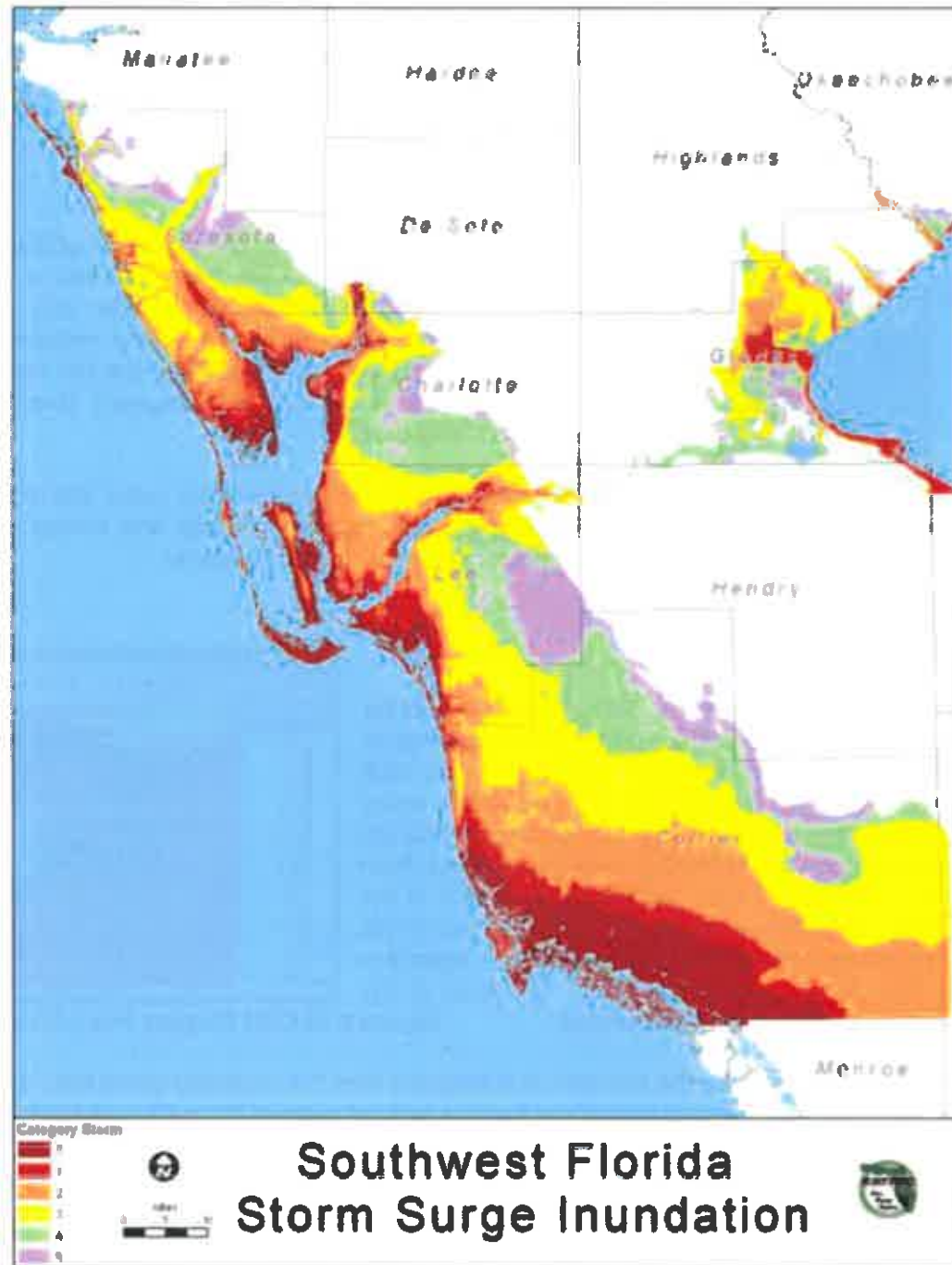


Figure 6 SLOSH Display Post-Processing

Using this methodology, once the elevation is subtracted from the projected storm tide, the storm tide limits are determined. The output of the tool is a merged polygon file holding all the maximum inundation zones for Tropical Storm through Category 5. The output, depicted in this Storm Tide Atlas is determined consistent with the coastal areas throughout the state. Figure 7 presents a compilation of the *Storm Tide Atlas* for the region.

Figure 7 Storm Surge for the Southwest Region



VARIATIONS TO CONSIDER

Variations between modeled versus actual measured storm tide elevations are typical of current technology in coastal storm surge modeling. In interpreting the data emergency planners should recognize the uncertainties characteristic of mathematical models and severe weather systems such as hurricanes. The storm tide elevations developed for this study and presented in the *Storm Tide Atlas* should be used as guideline information for planning purposes.

Storm Tide & Wave Height

Regarding interpretation of the data, it is important to understand that the configuration and depth (bathymetry) of the Gulf bottom will have a bearing on surge and wave heights. A narrow shelf, or one that drops steeply from the shoreline and subsequently produces deep water in close proximity to the shoreline, tends to produce a lower surge but a higher and more powerful wave. Those regions, like the Southwest Region, which have a gently sloping shelf and shallower normal water depths, can expect a higher surge but smaller waves. The reason this occurs is because a surge in deeper water can be dispersed down and out away from the hurricane. However, once that surge reaches a shallow gently sloping shelf it can no longer be dispersed away from the hurricane, consequently water piles up as it is driven ashore by the wind stresses of the hurricane. Wave height is NOT calculated by the SLOSH model and is not reflected within the storm tide delineations.

Forward Speed

Under actual storm conditions it may be expected that a hurricane moving at a slower speed could have higher coastal storm tides than those depicted from model results. At the same time, a fast moving hurricane would have less time to move storm surge water up river courses to more inland areas. For example, a minimal hurricane or a storm further off the coast such as Hurricane Elena (1985), which stalled 90 miles off the Tampa Bay coast for several tidal cycles, could cause extensive beach erosion and move large quantities of water into interior lowland areas. In the newest version of the Southwest SLOSH model, for each set of tracks in a specific direction, storms were run at forward speeds of 5, 10, 15 and 25 mph.

Radius of Maximum Winds

As indicated previously, the size of the storm or radius of maximum winds (RMW) can have a significant impact on storm surge especially in bay areas and along the Gulf of Mexico. All of the hypothetical storms were run at two different sizes, 20 mile radius of maximum winds and 35 mile radius of maximum winds.

Astronomical Tides

Surge heights were provided by NOAA for both mean tide and high tide. Both tide levels are referenced to North American Vertical Datum of 1988. The storm tide limits reflect high tide in the region.

Accuracy

As part of the Statewide Regional Evacuation Study, all coastal areas as well as areas surrounding Lake Okeechobee were mapped using remote-sensing laser terrain mapping (LIDAR⁴) providing the most comprehensive, accurate and precise topographic data for this analysis. As a general rule, the vertical accuracy of the laser mapping is within a 15 centimeter tolerance. However, it should be noted that the accuracy of these elevations is limited to the precision and tolerance in which the horizontal accuracy for any given point is recorded. Other factors such as artifact removal algorithms (that remove buildings and trees) can affect the recorded elevation in a particular location. For the purposes of this study, the horizontal accuracy cannot be assumed to be greater than that of a standard USGS 7 minute quadrangle map, or a scale of 1:24,000.

POINTS OF REFERENCE

County emergency management agency selected reference points which include key facilities or locations critical for emergency operations. The table below includes the map identification number, descriptions of the selected points and the elevation of the site. The elevation is based on the digital elevation data provided by the LIDAR. It should be noted that if the site is large, elevations may vary significantly. The table also provides the storm tide value from the SLOSH value and the depth of inundation (storm tide value minus the ground elevation) at the site.

Table 4 Selected Points of Reference

ID	LOCATION	SURGE	BASE_ELEV	TS_DEPTH	C1_DEPTH	C2_DEPTH	C3_DEPTH	C4_DEPTH	C5_DEPTH
1	Chokoloskee Island	TS	3.36	1.95	3.32	8.34	12.63	16.43	24.74
2	Carnestown	TS	4.43	0.30	1.77	6.78	11.12	15.16	26.43
3	Royal Palm Hammock	TS	2.43	2.32	3.56	8.90	13.21	17.20	22.78
4	Goodland	TS	4.22	0.62	2.29	7.03	11.36	15.24	18.64
5	Marco Island	TS	4.22	0.43	2.07	6.66	10.88	14.63	18.03
6	Marco Bridge	TS	4.68	0.07	1.76	6.42	10.69	14.54	17.94
7	Isles of Capri	TS	4.11	0.63	2.36	7.03	11.34	15.16	18.42
8	CR 951 / US 41	2	9.74	DRY	DRY	2.29	6.69	10.39	13.64
9	Government Center	1	5.61	DRY	1.03	6.85	11.05	14.83	18.23
10	City of Naples / Four Corners	TS	4.52	0.47	2.21	7.90	12.04	15.84	19.24
11	Pine Ridge Rd / US 41	4	18.77	DRY	DRY	DRY	DRY	2.16	5.77
12	Naples Park	2	11.61	DRY	DRY	1.56	6.19	10.19	13.99
13	Wiggins Pass / Vanderbilt	1	8.04	DRY	0.00	5.24	10.02	14.02	17.88
14	Lely Barefoot Beach	TS	5.51	0.17	2.21	7.94	12.74	16.73	20.49
15	North Collier Hospital	2	9.12	DRY	DRY	4.04	8.68	12.72	16.52
16	Hyde Park Condominium	2	8.22	DRY	DRY	4.50	9.24	12.95	16.59
17	Clam Pass	TS	2.12	3.08	4.82	10.60	15.22	18.93	22.53
18	Doctors Pass	TS	3.89	0.96	2.58	8.48	12.68	16.59	19.98
19	Gordon Pass	TS	5.27	DRY	1.32	6.35	10.62	14.42	17.82
20	Collier YMCA	3	14.67	DRY	DRY	DRY	2.50	6.25	9.84
21	Vineyards Elementary School	3	12.14	DRY	DRY	0.12	5.22	9.19	13.59
22	Santa Barbara / Golden Gate Pkwy	2	10.87	DRY	DRY	1.42	5.98	9.54	13.68
23	Airport Pulling Rd / Golden Gate Pkwy	2	9.99	DRY	DRY	2.17	6.68	10.41	13.83
24	Bayview Park	TS	4.12	0.88	2.53	7.72	12.02	15.82	19.22

25	Roberts Bay	TS	4.28	0.48	2.02	6.52	10.80	14.59	17.98
26	Orangetree	4	19.00	DRY	DRY	DRY	DRY	2.35	15.60
27	175 / Everglades Blvd	3	11.33	DRY	DRY	DRY	3.42	7.92	21.45
28	Naples Manor	1	6.32	DRY	0.53	5.85	10.20	13.94	17.24
29	Naples Shores	1	6.69	DRY	0.03	4.96	9.36	13.07	16.61
30	Port of the Islands	1	5.20	DRY	0.82	6.15	10.45	14.35	22.16
31	Everglades / Lynch Blvd	TS	4.47	DRY	1.41	6.91	11.23	15.25	23.18
32	Everglades City	TS	3.04	2.14	3.50	8.57	12.86	16.61	25.56
33	Lee Cypress	2	6.38	DRY	DRY	4.87	9.29	13.40	25.79
34	Ave Maria	4	21.02	DRY	DRY	DRY	DRY	0.83	19.72

STORM TIDE ATLAS

The surge inundation limits (MOM surge heights minus the ground elevations) are provided as GIS shape files and graphically displayed on maps in the *Hurricane Storm Tide Atlas for the Southwest Florida Region*. The *Atlas* was prepared by Southwest Florida Regional Planning Council under contract to the State of Florida, Division of Emergency Management, as part of this study effort. The maps prepared for the *Atlas* consist of base maps (1:24000) including topographic, hydrographic and highway files (updated using 2008 county and state highway data). Detailed shoreline and storm tide limits for each category of storm were determined using the region's geographic information system (GIS).

The purpose of the maps contained in this Atlas is to reflect a worst probable scenario of the hurricane storm tide inundation and to provide a basis for the hurricane evacuation zones and study analyses. While the storm tide delineations include the addition of an astronomical mean high tide and tidal anomaly, it should be noted that the data reflects only stillwater saltwater flooding. **Local processes such as waves, rainfall and flooding from overflowing rivers, are usually included in observations of storm tide height, but are not surge and are not calculated by the SLOSH model. It is incumbent upon local emergency management officials and planners to estimate the degree and extent of freshwater flooding as well as to determine the magnitude of the waves that will accompany the surge.**

Figure 8 provides an index of the map series.

NOTES ON STORM TIDE LIMITS

Historically, the SLOSH storm surge analysis had focused on "average" storm parameters (size and forward speed), although the intensity and angle of approach was modeled to include direct strikes and catastrophic intensity. In the 2010 Regional Evacuation Study Update, 12,000 hypothetical hurricanes were included in the SLOSH suite of storms modeled varying forward speeds and the radii of maximum winds to include the large storm events and different forward speeds. This allowed for the development of a truer picture of the storm surge vulnerability in the region. The five categories of hurricane reflect a "worst probable" storm tide limit for hurricanes holding the wind speed constant (consistent with the Saffir Simpson Hurricane Wind Scale) while varying storm parameters include size, forward speed, and angle of approach.

This has led to some confusion regarding evacuation decision-making since hurricane evacuations are based primarily on storm surge vulnerability. The National Oceanic and Atmospheric Administration (NOAA) is working to enhance the analysis and prediction of storm surge. Direct estimates of inundation are being communicated in the NHC's Public Advisories and in the Weather Forecast Office's (WFO) Hurricane Local Statements. NHC's probabilistic storm surge product, which provides the likelihood of a specific range of storm surge values, became operational in 2009, and the NWS Meteorological Development Laboratory is providing experimental, probabilistic storm surge products for 2010. In addition, coastal weather forecast offices will provide experimental Tropical Cyclone Impacts Graphics in 2010; these include a qualitative graphic on the expected storm surge

impacts. Finally, the NWS is exploring the possibility of issuing explicit Storm Surge Warnings which could be implemented in the next couple of years. In all of these efforts, the NWS is working to provide specific and quantitative information to support decision-making at the local level¹. NOAA continues to emphasize that the hurricane forecasts are not 100% accurate and dependent upon many factors.

Collier County

Legend

CATEGORY : OVERALL HGT

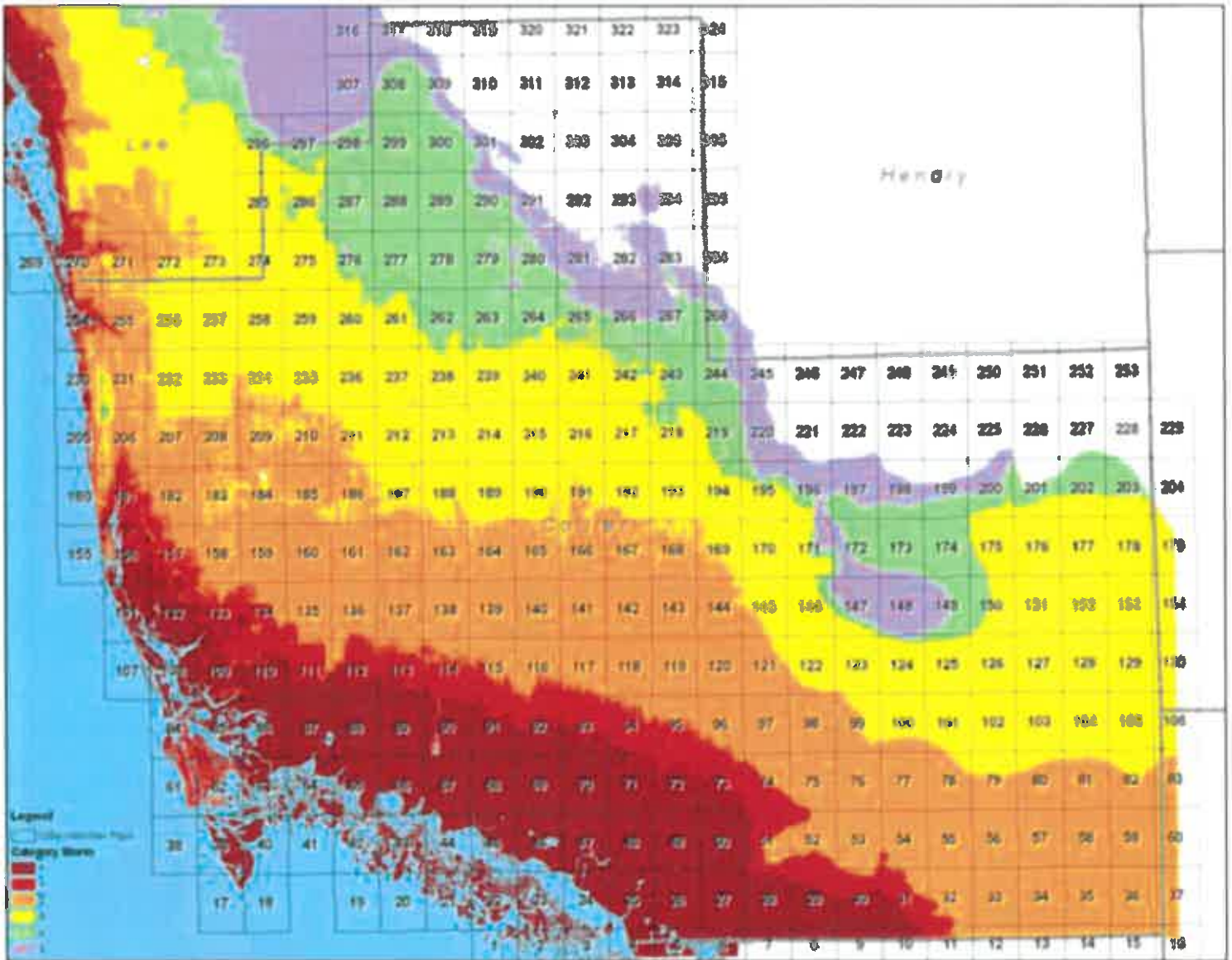
	TS: Up to 5.8 ft
	1 : Up to 8.2 ft
	2 : Up to 14.1 ft
	3 : Up to 19.5 ft
	4 : Up to 24.5 ft
	5 : Up to 41.9 ft

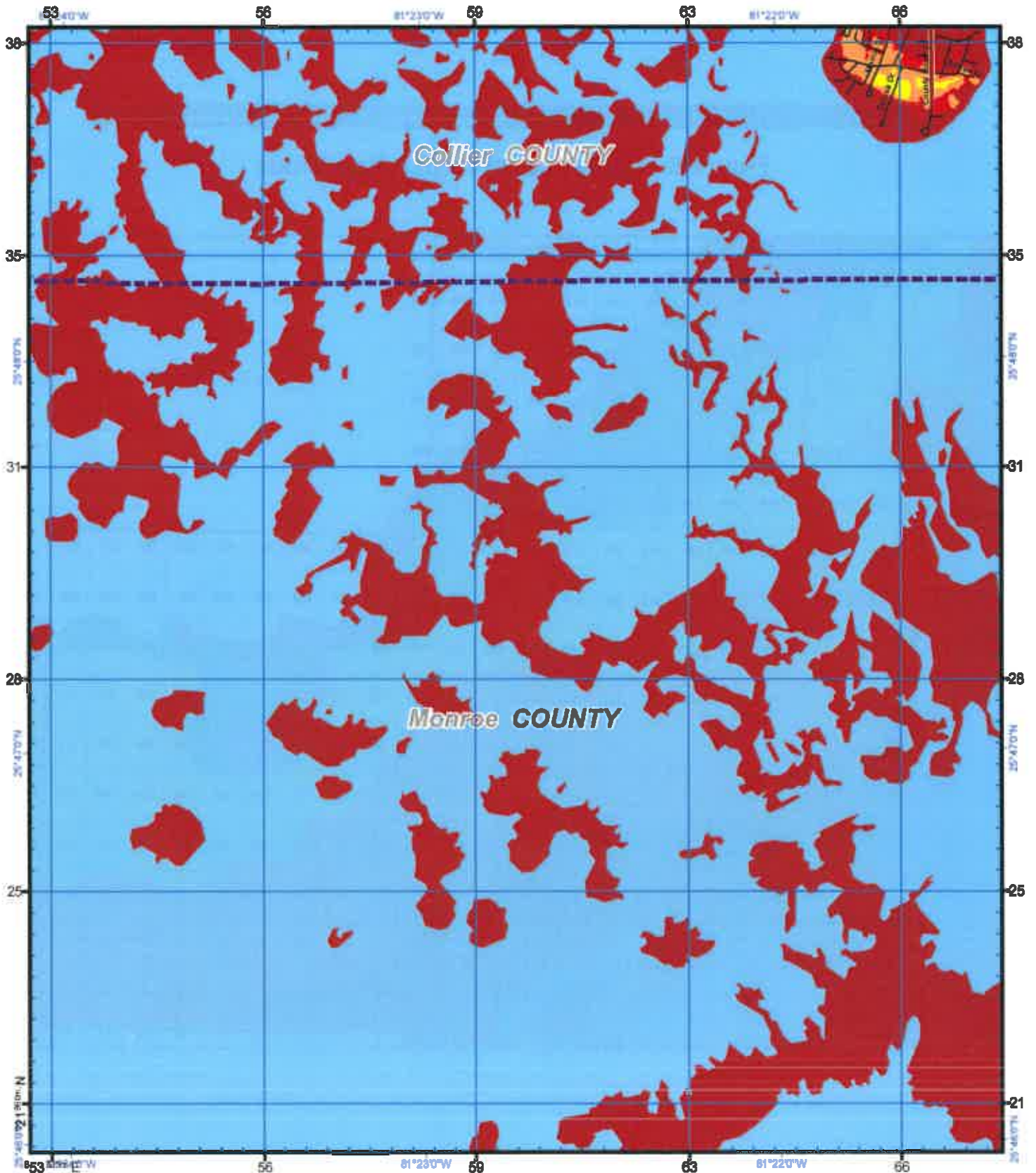
To the left are the storm tide limits identified for Collier County under the five (5) categories of hurricane on the Saffir Simpson Hurricane Wind Scale. It is important to recognize the following:

- The surge tide values represent the highest surge height elevation above a standard datum (NAVD88) predicted by the model in the entire county and will only be appropriate for selected areas.
 - Typically the highest surge tide values are NOT the surge heights predicted at the coast. The highest storm tide values are typically experienced inside bays and up rivers and inlets (water above ground).
 - Storm Tide ranges by category of storm are presented on Table 3 on page 16 of this document.
- For surge heights at specific locations, please refer to Table 4 on page 22 which provides the expected storm surge elevation at points of reference and the actual inundation (water depth) at that site.

¹http://www.nhc.noaa.gov/sshws_statement.shtml

Figure 8 Collier County Atlas Map Index





US National Grid
 100,000-m Square ID
MJ
 Grid Zone Designation
17R
 Datum = NAD 1983, 1,000-m UTMG



Notes:
 1. Surge levels are based on still water storm tide height elevation above MHW (MSL) at high tide with no wave setup.
 2. Total Storm Tide areas were derived from Maximum of No-Windage surge heights over 100-year based digital elevation.
 3. The Points of Interest are reported determined to be relevant to emergency management tasks (Hospitals).

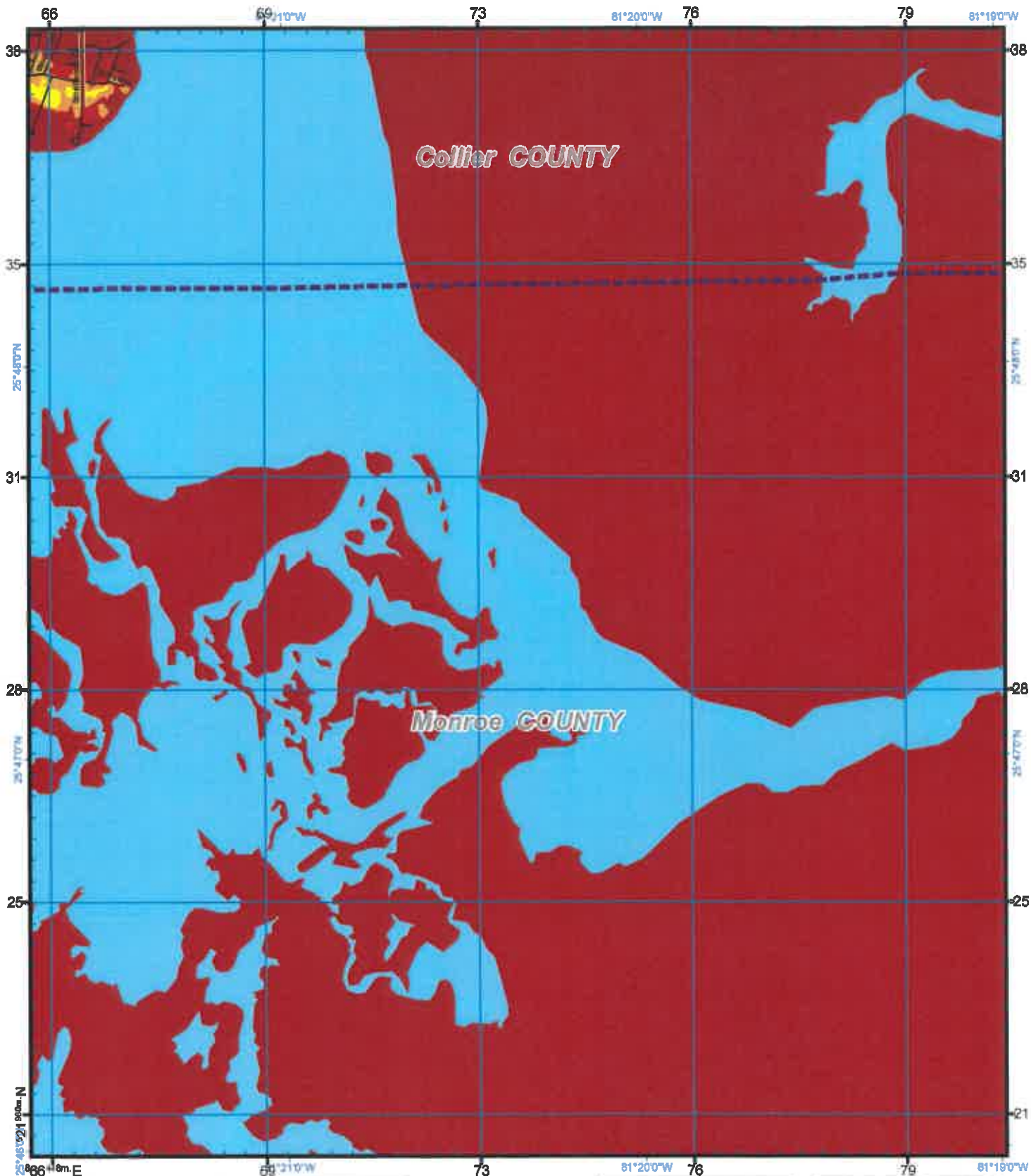
Storm Tide Zones
 Collier County, 2010
 Scale - 1:24,000
 0 2,000 Feet
 USNG Page 17R MJ 60 50
 Map Plate 3
 Page 27

Legend

	Ref Point	Cat	
	HOSPITAL	TS	
	City Limits	1	
	Evac Routes	2	
	WATER	3	
		4	
		5	



This map is for reference & planning purposes only. Hurricane evacuation decision-making and growth management implementation are local responsibilities. Please consult with local authorities.



US National Grid
100,000-m Square ID
MJ
Grid Zone Designation
17R
Datum = NAD 1983, 1,000-m USNG



Notes:
1. Surge limits are based on 100-year return period surge heights with a 10% chance of exceedance at high tide with no wave action.
2. Total Storm Tide Inundation is defined as the maximum surge height plus 1.5 times the surge height.
3. The Surges of Reference are assumed to be based on a regional storm effect.

Storm Tide Zones
Collier County, 2010
Scale - 1:24,000
0 2,000 Feet
USNG Page 17R MJ 64 50
Map Plate 4
Page 28

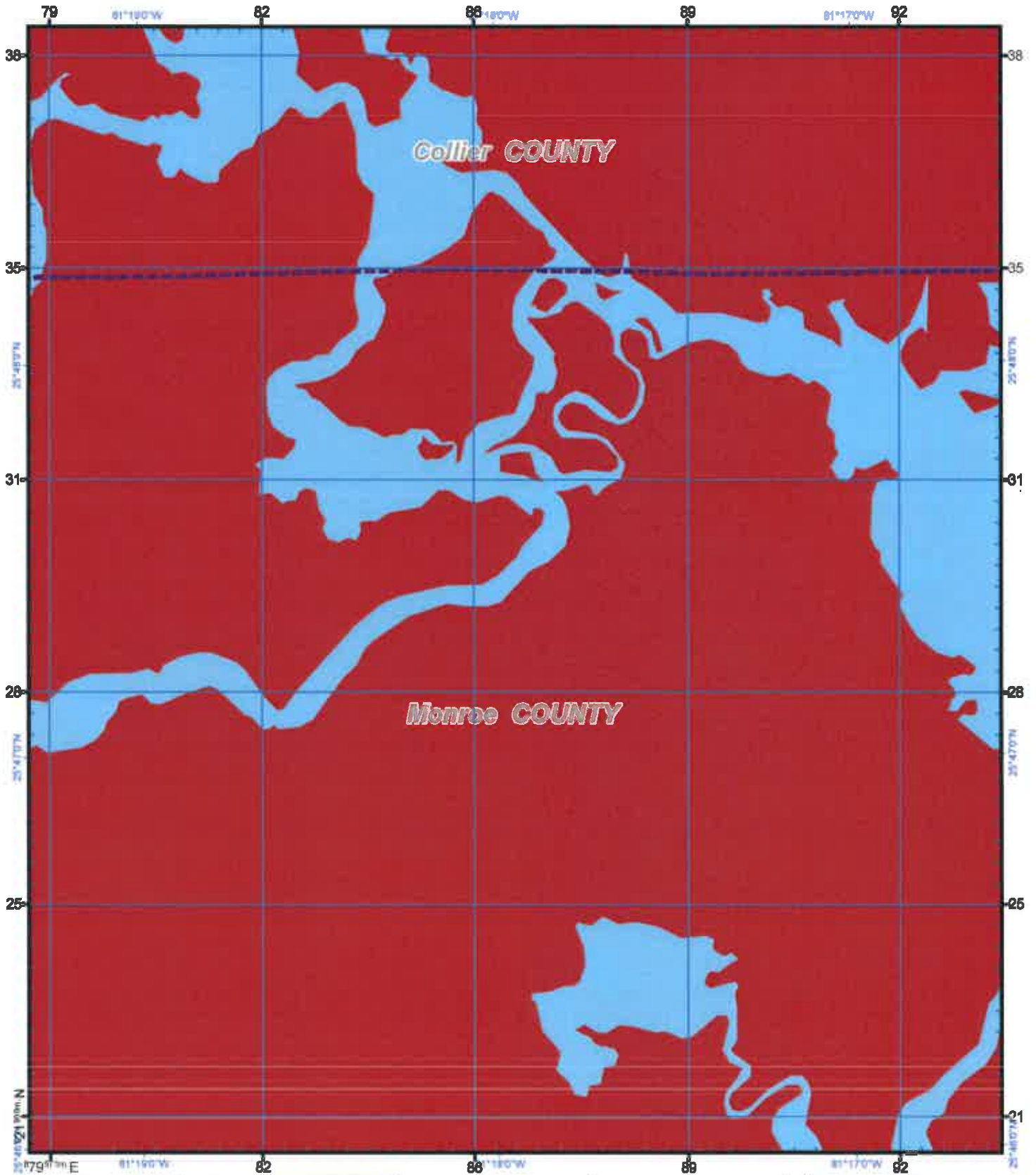
Legend

- Ref Point
- HOSPITAL
- City Limits
- Evac Route
- WATER

Cat	Color
TS	Dark Red
1	Red
2	Orange
3	Yellow
4	Light Green
5	Light Blue



This map is for reference & planning purposes only. Hurricane evacuation decision-making and growth management implementation are local responsibilities. Please consult with local authorities.



US National Grid
 100,000-m Square ID
MJ
 Grid Zone Designation
17R
 Datum = NAD 1983, 1,000-m UTM



Notes:
 1. Surge limits are based on still water surge tide height calculations using NAOCE at high tide with no wave wind.
 2. Total Storm Tide limits were derived from Maximum of Wave+Surge heights using LIDAR based digital elevation.
 3. The Points of Reference are located in accordance to be used by the emergency management officials.

Storm Tide Zones
 Collier County, 2010
 Scale - 1:24,000
 Feet
 0 2,000
 USNG Page 17R MJ 68 50
 Map Plate 5
 Page 29

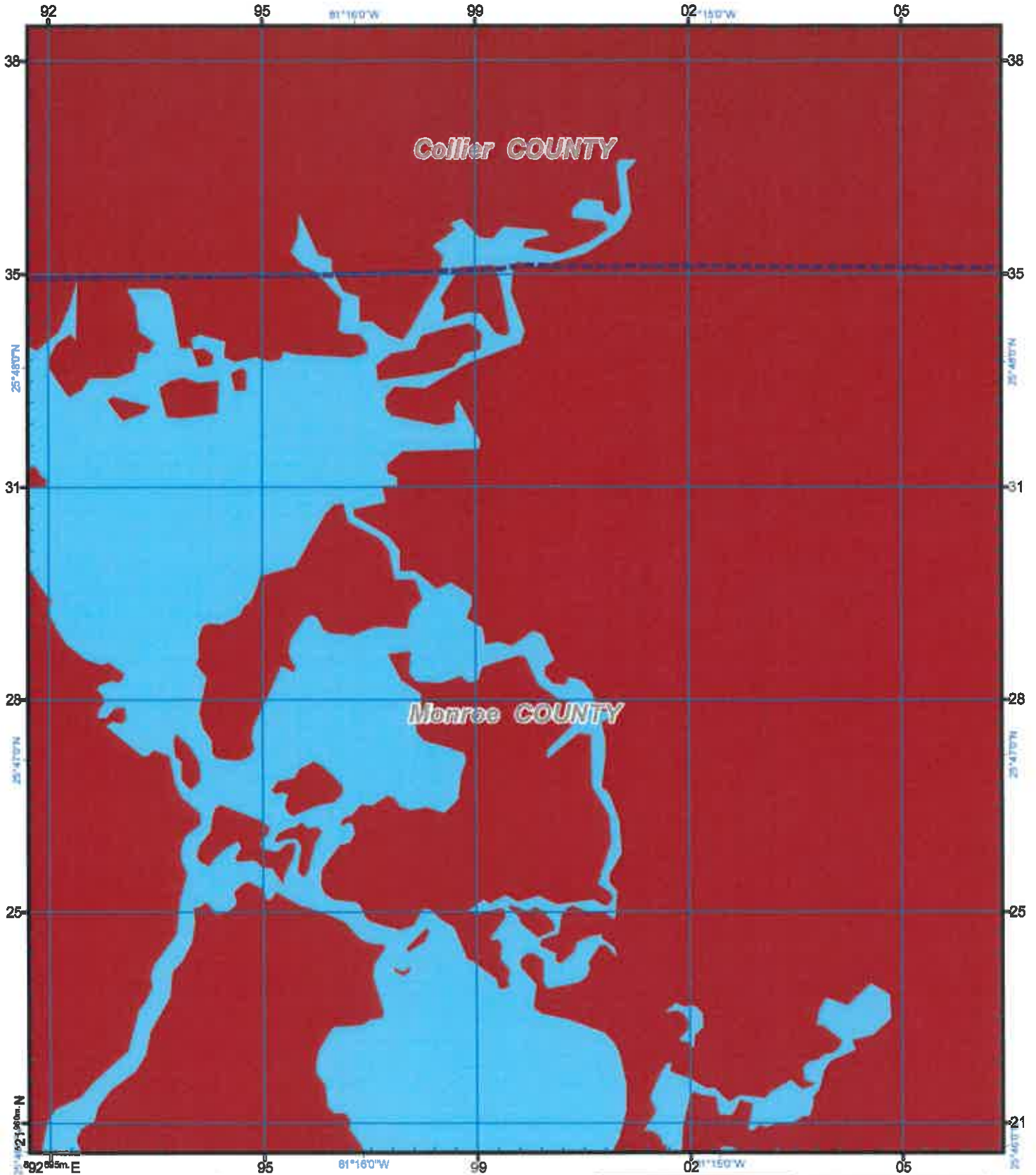
Legend

- Ref Point
- HOSPITAL
- City Limits
- Evac Route
- WATER

Cat	Color
TS	Red
1	Orange
2	Yellow
3	Light Green
4	Green
5	Purple



This map is for reference & planning purposes only. Hurricane evacuation decision-making and growth management implementation are local responsibilities. Please consult with local authorities.



US National Grid
100,000-m Square ID
MJ

Grid Zone Designation
17R

Datum = NAD 1983, 1,000-m USNG



Notes:

1. Surge levels are based on 100-year return period surge elevation above MHWOD at high tide with no wind setup.
2. Total Storm Tide levels were derived from the sum of 1) Maximum surge height using IUDAS based surge elevation.
3. The Points of Reference are locations considered to be relevant to emergency management officials.

Storm Tide Zones
Collier County, 2010
Scale - 1:24,000

USNG Page 17R MJ 72 50
Map Plate 6
Page 30

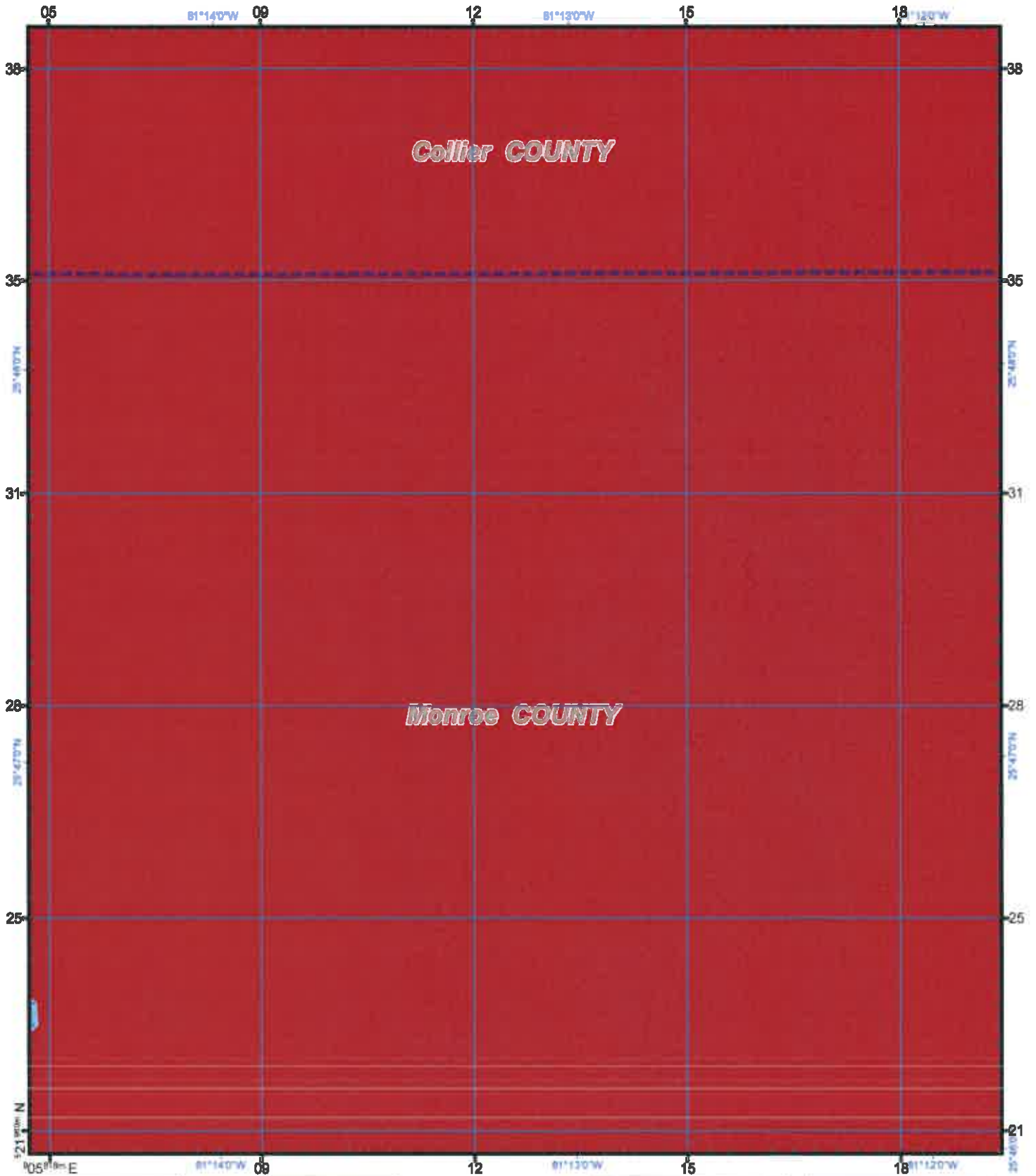
Legend

- Ref Point
- HOSPITAL
- City Limits
- Evac Route
- WATER

Cat	Color
TS	Dark Red
1	Red
2	Orange
3	Yellow
4	Light Green
5	Light Blue



This map is for reference & planning purposes only. Hurricane evacuation decision-making and growth management implementation are local responsibilities. Please consult with local authorities.



US National Grid
 100,000-m Square ID
MJ
 Grid Zone Designation
17R
 Datum = NAD 1983, 1,000-m USNG



Notes:
 1. Surge limits are based on all water above tide height measured above NAVD83 at high tide with no wind effect.
 2. Flood limits are based on the maximum surge height over LCGM based digital elevation.
 3. The Points of Reference are locations determined to be relevant to emergency management efforts.

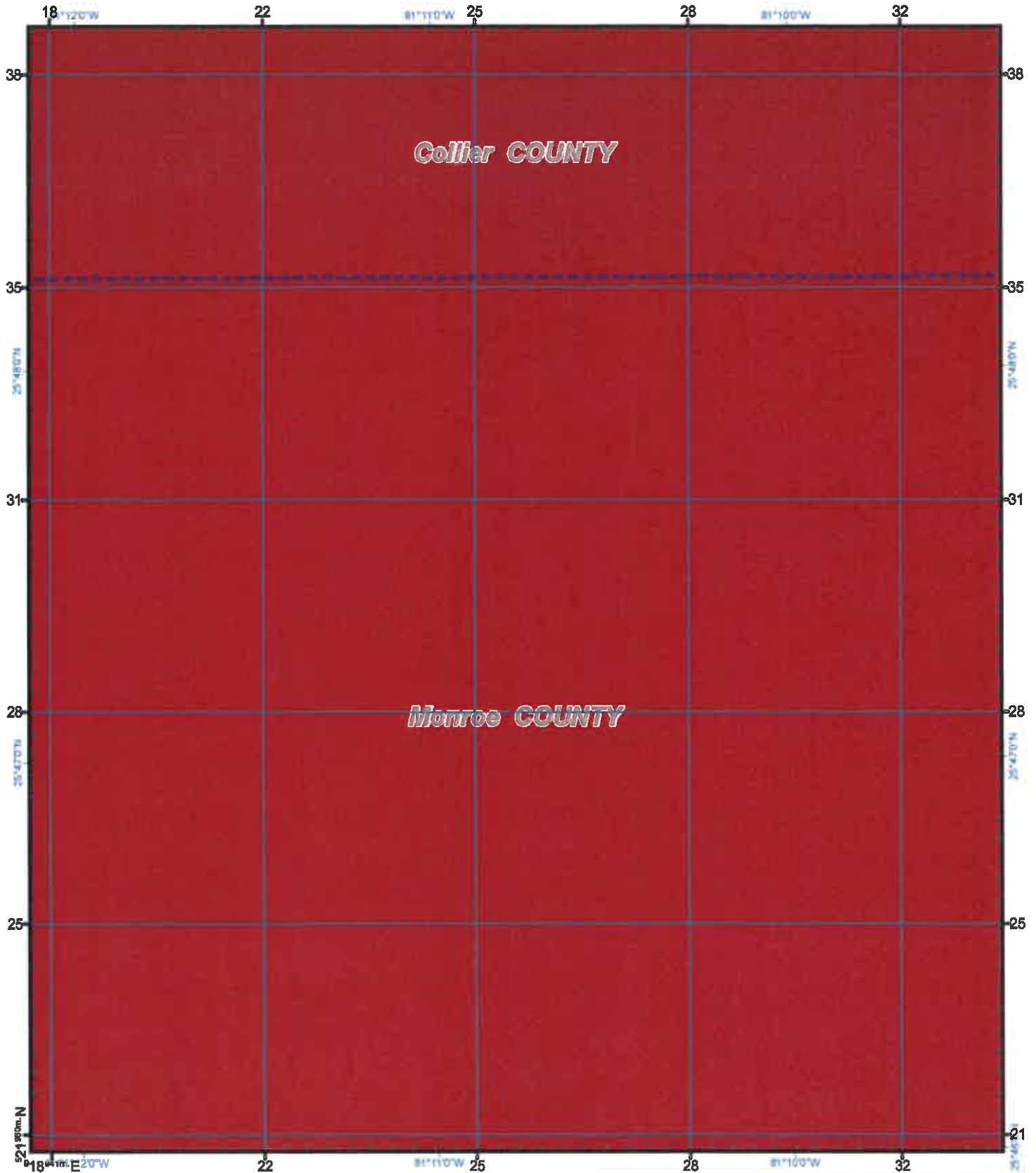
Storm Tide Zones
 Collier County, 2010
 Scale - 1:24,000
 0 2,000 Feet
 USNG Page 17R MJ 76 50
 Map Plate 7
 Page 31

Legend

	Ref Point	Cat
	HOSPITAL	TS
	City Limits	1
	Evac Route	2
	WATER	3
		4
		5



This map is for reference & planning purposes only. Hurricane evacuation decision-making and growth management implementation are local responsibilities. Please consult with local authorities.



US National Grid
 100,000-m Square ID
MJ
 Grid Zone Designation
17R
 Datum = NAD 1983, 1,000-m USNG



Notes:
 1. Surge levels are based on still water storm tide height, minimum storm surge heights at high tide with no wind setup.
 2. These Storm Tide Levels were derived from Storm Surge of Storms (SSoS) heights using LIDAR based digital elevation.
 3. The limits of Polynesia are locations determined to be relevant to emergency management of Polynesia.

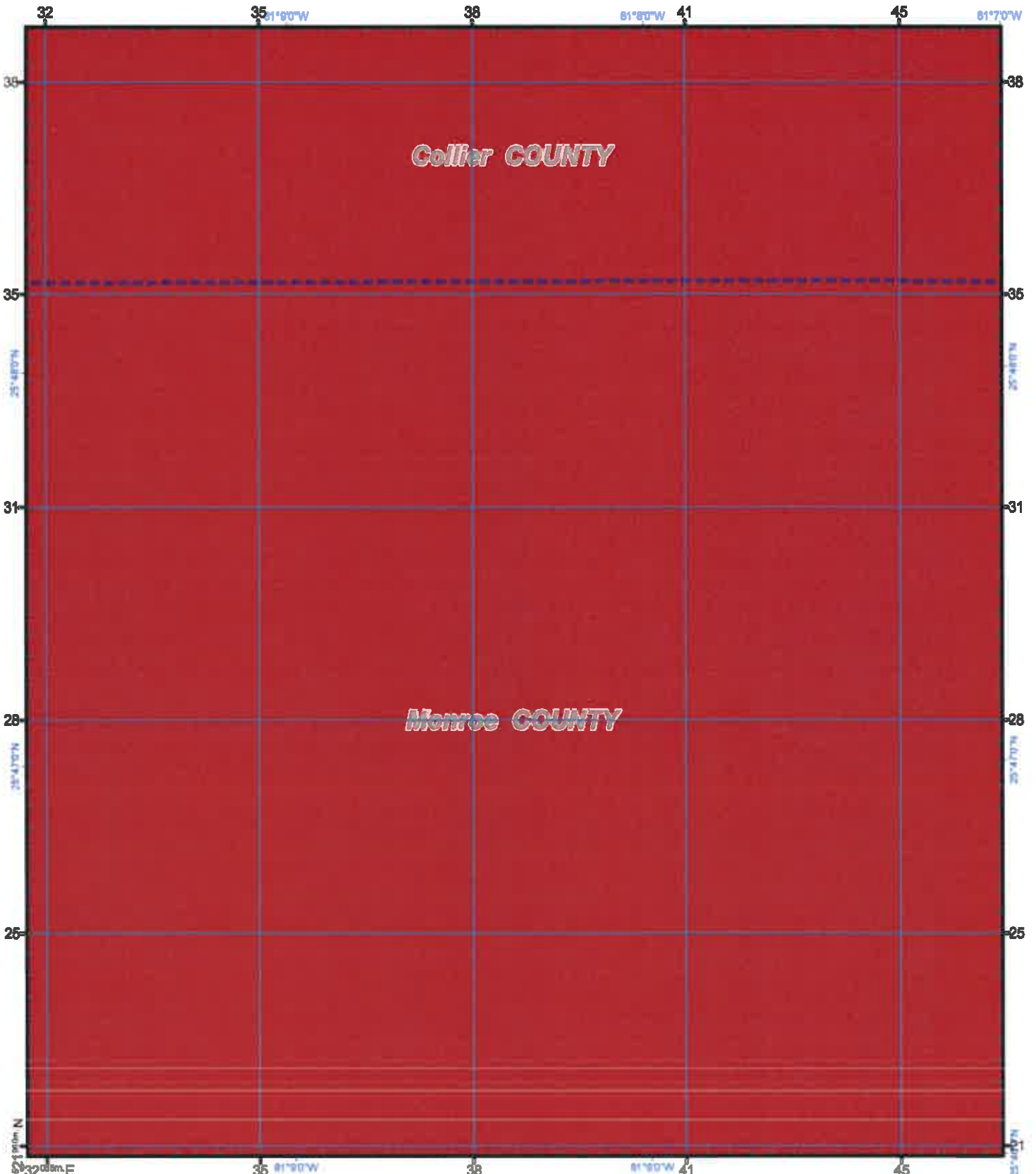
Storm Tide Zones
 Collier County, 2010
 Scale - 1:24,000
 0 2,000 Feet
 USNG Page 17R MJ 80 60
 Map Plate 8
 Page 32

Legend

	Ref Point	Cat
	HOSPITAL	TS
	City Limits	1
	Evac Route	2
	WATER	3
		4
		5



This map is for reference & planning purposes only. Hurricane evacuation decision-making and growth management implementation are local responsibilities. Please consult with local authorities.



US National Grid
100,000-m Square ID
MJ
Grid Zone Designation
17R
Datum = NAD 1983, 1,000-m USNG



Notes:
1. Surge levels are based on still water where the surge elevation above (WICZ) at high tide will no more than 10 ft.
2. The Surge Zone Limits were defined by the National Hurricane Center (NHC) based on the latest available data.
3. The Points of Reference are locations determined to be relevant to emergency management officials.

Storm Tide Zones
Collier County, 2010
Scale - 1:24,000
0 2,000 Feet
USNG Page 17R MJ 84 50
Map Plate 9
Page 33

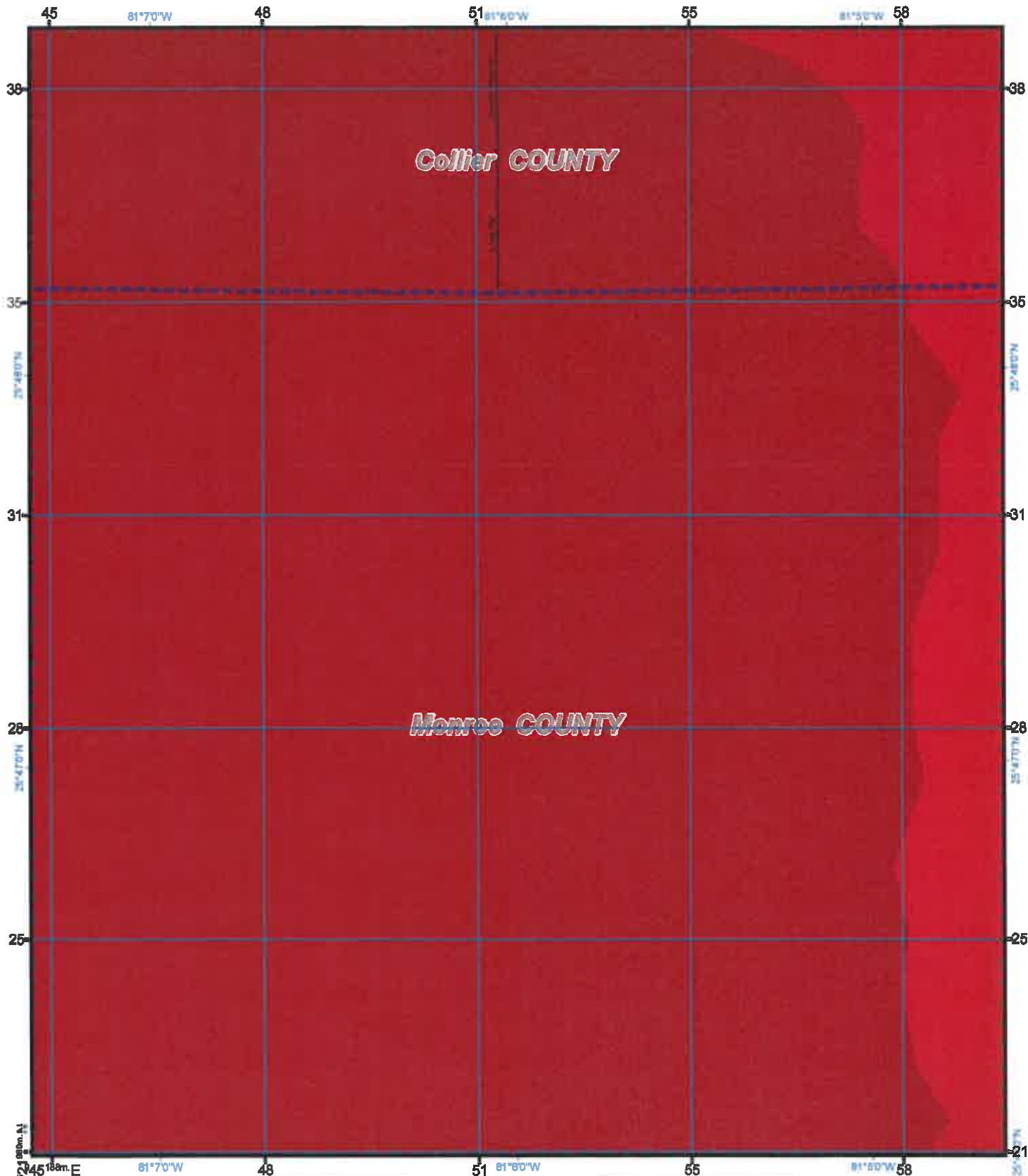
Legend

- Ref Point
- HOSPITAL
- City Limits
- Evac Route
- WATER

Cat	Color
TS	Red
1	Orange
2	Yellow
3	Light Green
4	Green
5	Purple



This map is for reference & planning purposes only. Hurricane evacuation decision-making and growth management implementation are local responsibilities. Please consult with local authorities.



US National Grid
100,000-m Square ID
MJ

Grid Zone Designation
17R

Datum = NAD 1983, 1,000-m USNG



Notes:

1. Single zones are based on 2002 water levels from Florida's emergency plan, NAWCS, as they relate with the same setup.
2. Total Storm Tide zones were derived from Maximum of Maximum Surge Heights and LIDAR-based digital elevation.
3. The Point of Reference will indicate emergency management officials.

Storm Tide Zones
Collier County, 2010
Scale - 1:24,000

USNG Page 17R MJ 88 50
Map Plate 10
Page 34

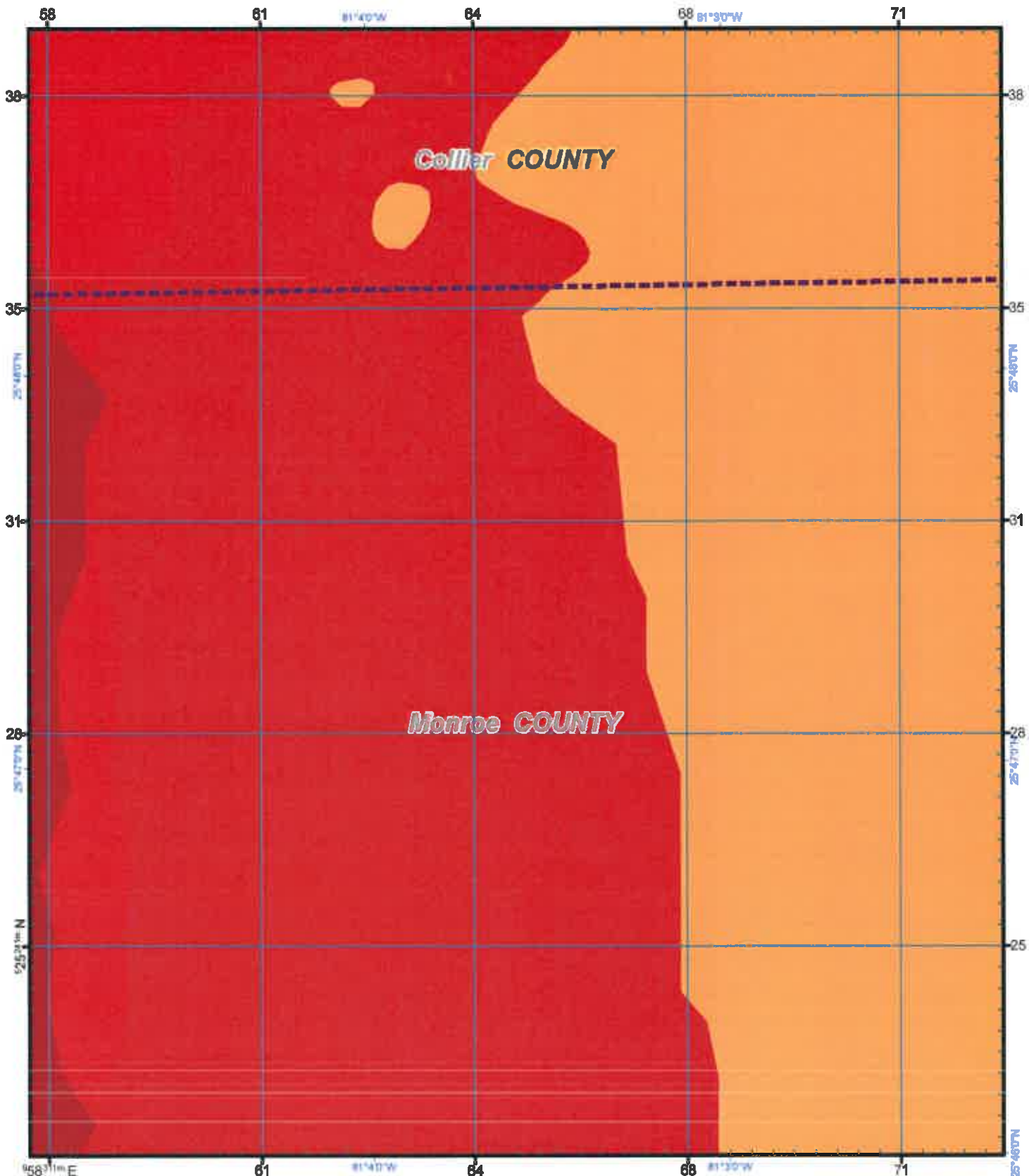
Legend

- Ref Point
- HOSPITAL
- City Limits
- Evac Route
- WATER

Cat	Color
TS	Red
1	Orange
2	Yellow
3	Light Green
4	Green
5	Purple



This map is for reference & planning purposes only. Hurricane evacuation decision-making and growth management implementation are local responsibilities. Please consult with local authorities.



US National Grid
 100,000-m Square ID
MJ
 Grid Zone Designation
17R
 Datum = NAD 1983, 1,000-m USNG



Notes:
 1. Surge levels are based on
 still water storm tide height
 elevation above MLLW (MSL) at high tide with no wave
 setup.
 2. Total Storm Tide levels were
 obtained from Maximum of
 Maximum surge heights
 over 1,000 ft based upon
 elevation.
 3. The Province of Northern
 Columbia determined to be
 subject to emergency flooding
 potential.

Storm Tide Zones
 Collier County, 2010
 Scale - 1:24,000
 Feet
 0 2,000
 USNG Page 17R MJ 92 50
 Map Plate 11
 Page 35

Legend

	Ref Point	Cat		TS
	HOSPITAL	1		2
	City Limits	2		3
	Evac Route	3		4
	WATER	4		5



This map is for reference & planning purposes only. Hurricane evacuation decision-making and growth management implementation are local responsibilities. Please consult with local authorities.