

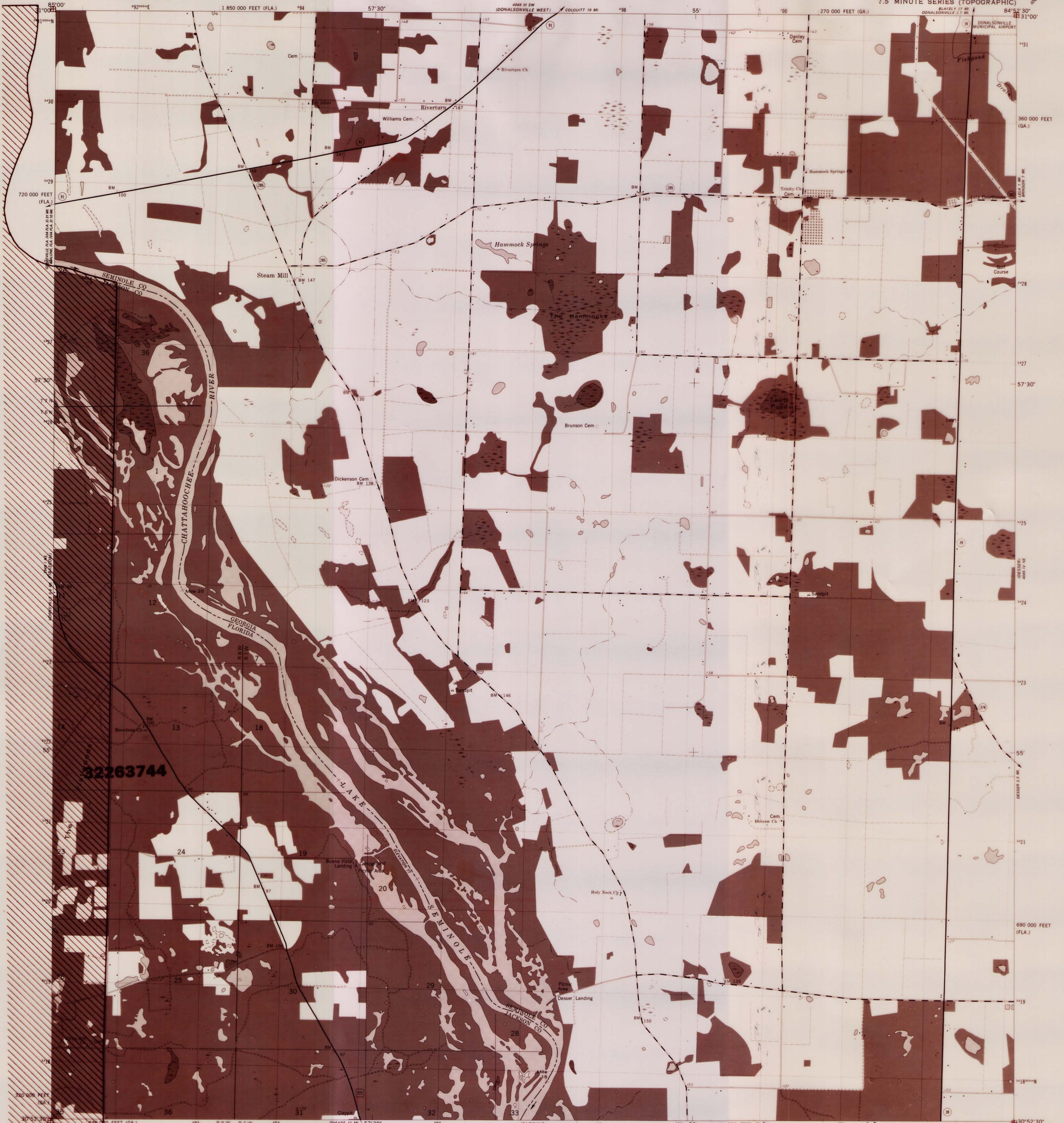
State of Florida
DEPARTMENT OF ENVIRONMENTAL PROTECTION

Delineation Map for Potable Water Well Permitting
Chapter 62-524 F.A.C.

Prepared November 1994
Quad 5640

STEAM MILL (GA)
UNITED STATES
DEPARTMENT OF THE INTERIOR
GEOLOGICAL SURVEY

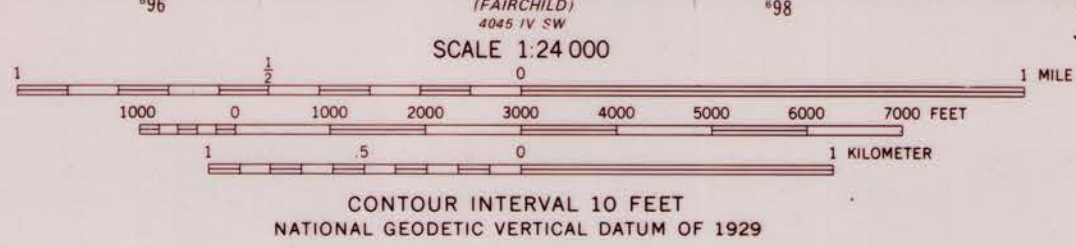
STEAM MILL QUADRANGLE
GEORGIA-FLORIDA
7.5 MINUTE SERIES (TOPOGRAPHIC)



32263744

Maped, edited and published by the Geological Survey
Revised in cooperation with State of Florida agencies
Checked by USGS, NOAA, and USCE
Culture and drainage in part compiled from aerial photographs
taken 1947. Topography by plane-table surveys 1952 and 1954
Revised from aerial photographs taken January 1976
Field checked 1978. Map edited 1982
Polyconic projection. 10,000-foot grid ticks based on
Georgia coordinate system, west zone, and Florida
coordinate system, north zone
1000-meter Universal Transverse Mercator grid, zone 16
1927 North American Datum
To place on the predicted North American Datum 1983
move the projection lines 17 meters south and
8 meters west as shown by dashed corner ticks
Fine red dashed lines indicate selected fence and field lines where
generally visible on aerial photographs. This information is unchecked

UTM GRID AND 1982 MAGNETIC NORTH
DECLINATION AT CENTER OF SHEET



ROAD CLASSIFICATION
Primary highway, hard surface — Light-duty road, hard or improved surface
Secondary highway, hard surface — Unimproved road
Interstate Route — U. S. Route — State Route
County Route

STEAM MILL, GA.-FLA.
N3052.5-W8452.5/7.5
1982
DMA 4045 IV NW-SERIES V845

Explanation

The following describe the delineation areas with the contamination for which each was delineated and for which testing is required under Rule 62-524.600(1) F.A.C.
Note: (1) Indicates solvent bonded couplings prohibited (62-524.550(2)(b))
(2) Indicates subsidized waterlines. Mandatory connection requirements may apply (62-524.300(2)(5))

32263744
Ethylene Dibromide

The delineated areas on this map represent areas where ground water contamination is known to exist as defined in chapter 62-524, F.A.C. This does not indicate that the areas which are not delineated are necessarily free from ground water contamination.

INFORMATION: For Copies of this map call:
Bureau of Information Systems (904)922-7121
For information about this map contact:
Agricultural Source and Water Well Management Section
Bureau of Drinking Water and Ground Water Resources
Division of Water Facilities
Department of Environmental Protection
(904)486-3601
Map Prepared November 1994
Delineation Round 3