

This map was prepared by Kaitlyn Summerfield with the Division of Environmental Assessment and Restoration. For more information please contact [Kaitlyn.summerfield@dep.state.fl.us](mailto:Kaitlyn.summerfield@dep.state.fl.us)

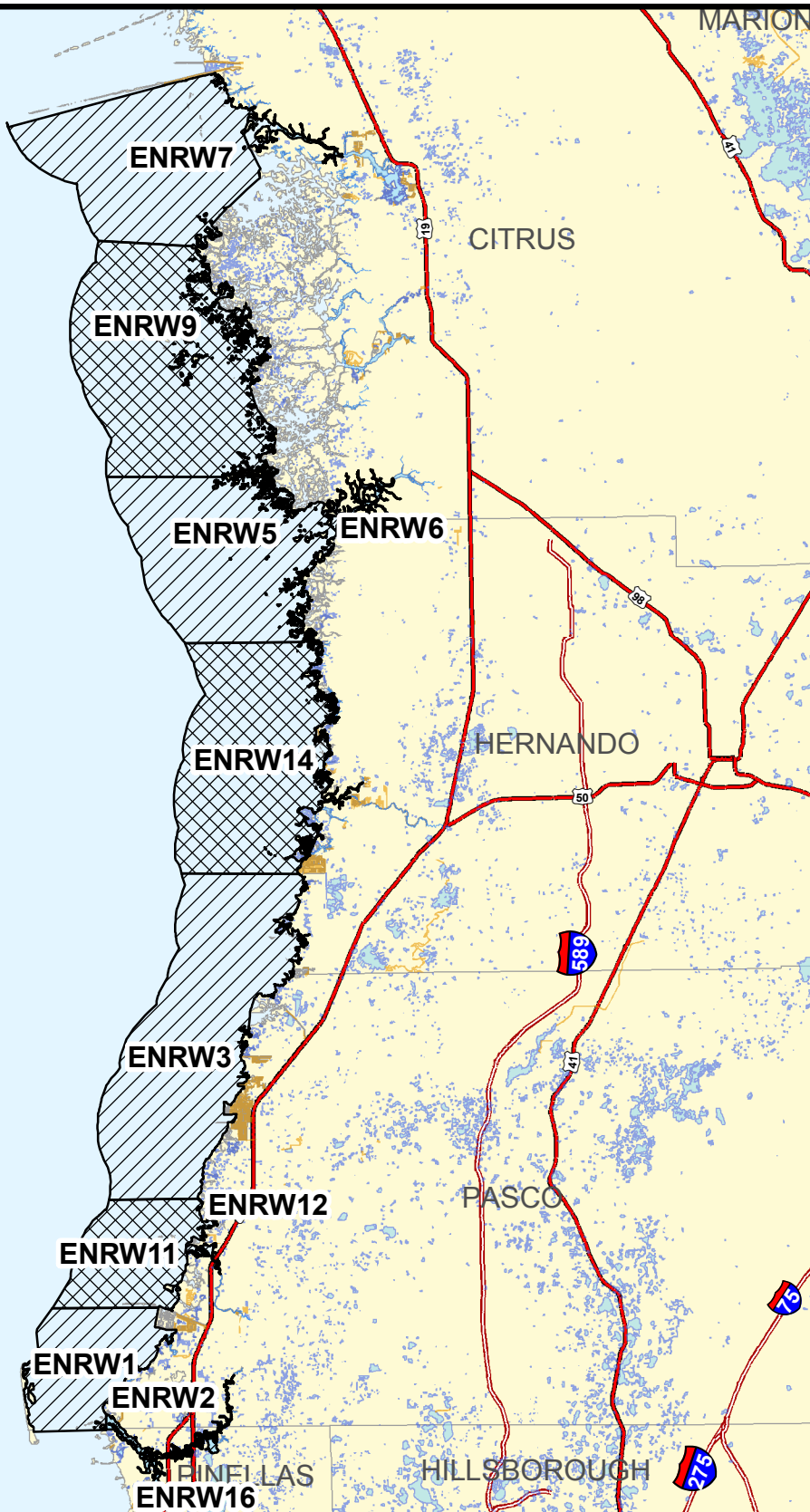
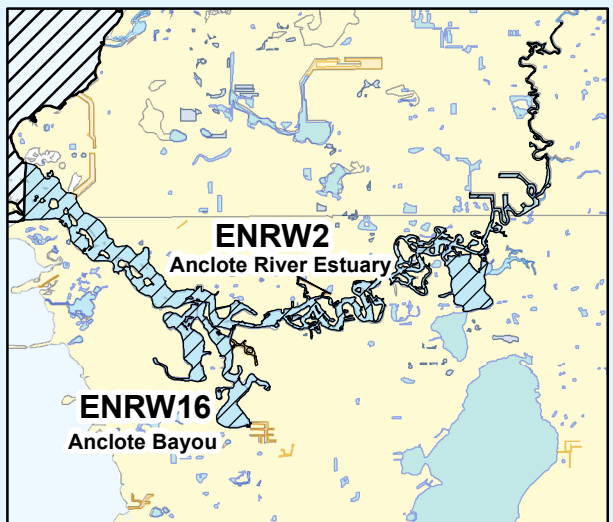
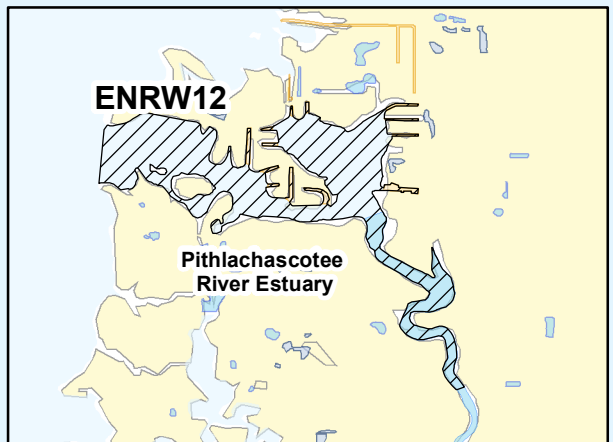
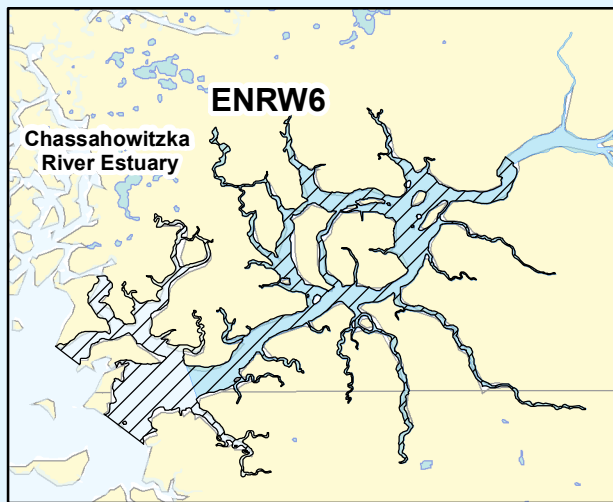
# Estuary Nutrient Regions

October 2014

Suwannee, Cedar Key,  
Waccasassa, Withlacoochee

- Estuary Nutrient Regions**  
Label, Estuary, Segment
-  ENRX15, Big Bend and Apalachee Bay, Cedar Keys
  -  ENRV1, Suwannee Offshore
  -  ENRV2, Waccasassa Offshore
  -  ENRV3, Withlacoochee Offshore





This map was prepared by Kaitlyn Summerfield with the Division of Environmental Assessment and Restoration. For more information please contact Kaitlyn.summerfield@dep.state.fl.us

### Estuary Nutrient Regions

#### Label, Estuary, Segment

- ENRW1, Springs Coast (Crystal River to Anclote River), Anclote Offshore
- ENRW2, Springs Coast (Crystal River to Anclote River), Anclote River Estuary
- ENRW3, Springs Coast (Crystal River to Anclote River), Aripeka and Hudson Offshore
- ENRW5, Springs Coast (Crystal River to Anclote River), Chassahowitzka Offshore
- ENRW6, Springs Coast (Crystal River to Anclote River), Chassahowitzka River Estuary
- ENRW7, Springs Coast (Crystal River to Anclote River), Crystal Offshore
- ENRW8, Springs Coast (Crystal River to Anclote River), Crystal River Estuary
- ENRW9, Springs Coast (Crystal River to Anclote River), Homosassa Offshore
- ENRW11, Springs Coast (Crystal River to Anclote River), Pithlachascotee Offshore
- ENRW12, Springs Coast (Crystal River to Anclote River), Pithlachascotee River Estuary
- ENRW14, Springs Coast (Crystal River to Anclote River), Weeki Wachee Offshore
- ENRW15, Springs Coast (Crystal River to Anclote River), Weeki Wachee River Estuary
- ENRW16, Springs Coast (Crystal River to Anclote River), Anclote Bayou

## Estuary Nutrient Regions

October 2014

Springs Coast

(Crystal River to Anclote River)

Map 1 of 2

